

MUSSER FORESTS INC

INDIANA, PENNSYLVANIA

EVERGREEN SEEDLINGS AND TRANSPLANTS • ROSES
HARDWOOD SEEDLINGS • SHRUBS • AZALEAS

1958

RHODODENDRON • ORNAMENTAL AND SHADE TREES
FRUIT AND FLOWERING TREES • BERRIES

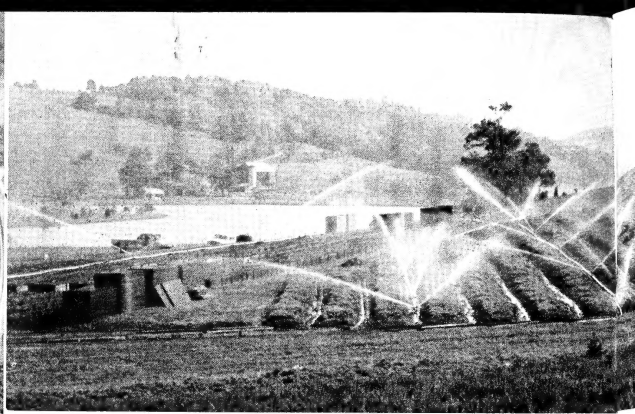


Largest Nursery of Its Kind in America

20 Million
TREES a Year!



Modern Machines Prepare Seed Beds



A 35-acre Lake Supplies Water

Specialized Machinery and

To supply the vigorous, well-grown nursery stock in which we take pride, and yet to keep abreast of ever increasing costs of production, Musser Forests has made large investments in the most modern equipment. A number of the machines were especially built for the particular work they do—grading, tilling, sanding, fertilizing and heavy hauling. We are proud of this equipment and of our modern nursery management.

Experienced hands must take over the work in

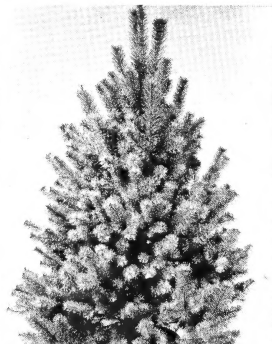
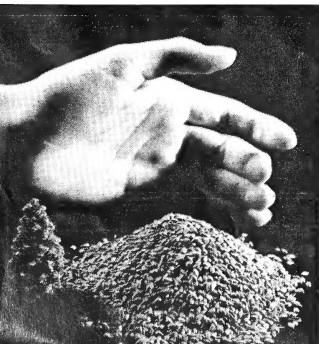


We Take Pride in the Quality of our Stock

We Save Time and Labor

Plant QUALITY

Selected Seed for Perfect Trees — "There is a Difference"



Experienced Men and Women Supplement the



Water for Constant Irrigation

and Well-Trained Hands

the nursery when the machines have finished—seeding, weeding, transplanting, mulching and shearing, to mention but a few of the many painstaking jobs.

Experienced eyes must select and grade stock; experienced hands must pack it. Many of the people who help produce Musser Nursery stock have been with us as long as twenty years.

Musser teamwork and coordination PAYS OFF!

or — You Save Money

MUSSER Trees

the Machines with Careful Handwork

Copyright 1958
Musser Forests, Inc.
All Rights Reserved

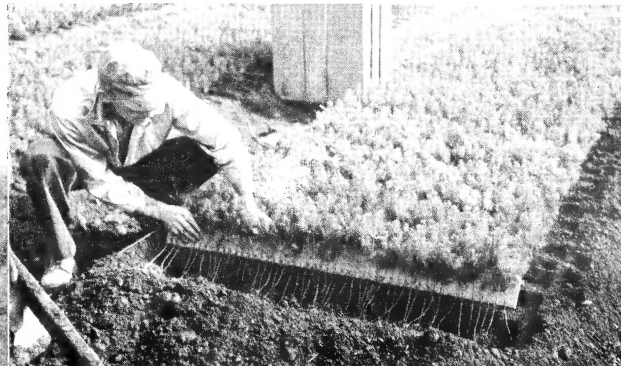


Liquid Fertilizer Supplies Extra Nutrients



Fred Musser Jr. Learns Techniques of Mechanized Horticulture

We Transplant for Stronger Roots



FRUIT TREES

No C. O. D.'s. All stock on this page must be paid for in full with order. Shipping charges will be prepaid on 6 or less; 7 or more, express collect. Complete planting instructions included.

DWARF FRUIT

Where space is limited, plant these dwarf trees. They do not spread more than 10 to 15 feet. Most varieties start producing fruit the first year after planting. Fruit is as large or larger than standard trees. PLANT TWO OR MORE VARIETIES FOR POLLINATION.

DWARF APPLE TREES (3 to 4 ft.) Each Per 3
 Select, branched, Cortland, Red McIntosh, Double Red Delicious, Yellow Delicious. (Descriptions below) **\$4.00 \$11.25**

DWARF PEAR TREES (3 to 4 ft.) Each Per 3
 Bartlett, Clapp's Favorite. (Descriptions below) **\$4.00 \$11.25**
 SHIPPED PREPAID

STANDARD APPLE

Your choice of those listed below. Plant two varieties for successful pollination (5 to 6 ft.). **1 to 6 each \$2.50** **7 or more each \$2.15**

WRITE FOR SPECIAL QUANTITY PRICES

EARLY McINTOSH. Ripens in August. Bright red, early Apple. The flesh is white, tender and juicy, with fine flavor. Ideal dessert Apple.

STAYMAN'S WINESAP. Comes into bearing young. A reliable cropper with medium to large-sized fruit. Slightly striped, coloring to dull red. Tree moderately vigorous.

YELLOW DELICIOUS. Ripens October to March. Bright golden yellow fruit of excellent quality. Firm, crisp and very juicy. Finest yellow Apple. Bears young and heavily.

RED McINTOSH. Ripens in October. Very attractive red Apple of highest quality. Tender, juicy and refreshing. Hardy. Bears young and annually.

CORTLAND. Ripens November to February. Large red fruit similar to McIntosh. Very hardy and desirable as a cross pollinator.

RED DELICIOUS. Ripens December to February. Large, dark red Apple with crisp, fine-grained flesh. Excellent flavor.

STANDARD PEACH

Your choice of selected varieties listed below. **Sturdy.** (5 to 6 ft.) **1 to 6 each \$2.50** **7 or more each \$2.15**

GOLDEN JUBILEE. We recommend this comparatively new, widely planted Peach. It is a real money-maker. Resists excessive cold and is a sure cropper. Early, large freestone with yellow, tender, juicy, sweet flesh. Ideal for home use and roadside market. Ripens August 20 to 25.

HALE HAVEN. Marvelous new Peach. Large, beautifully colored, yellow-fleshed fruit of the highest quality. Ripens 10 days to two weeks ahead of Elberta. Perfect freestone. Good shipper and a heavy bearer. Hardy. Extremely high color before ripening, allowing early picking for distant shipments. Include it in every planting. Ripens September 1 to 5.

EARLY ELBERTA. An excellent new variation on the famous Elberta. A little rounder in shape and about 10 days earlier in ripening. Freestone. Ripens September 6 to 10.

RED HAVEN. New, early Peach, thoroughly satisfactory in every way. It has the fine flavor of South Haven and Hale Haven. When other Peaches are still green, this one is bright red. Hardy; freestone. Self-pollinizing; prolific. Ripens August 20 to 25.

STANDARD PEAR

BARTLETT · CLAPP'S FAVORITE · SECKEL

1 Each of These Three Best Varieties (4 to 5 ft.)
THREE varieties needed for pollination . . . Postpaid **3 for \$6.95**
\$2.50 each, postpaid; 7 or more, \$2.15 each, express collect

BARTLETT. Well known and adaptable to all situations. Large, golden yellow fruit with a reddish blush. Tender, juicy, with a delicious, musky aroma. The vigorous, long-lived trees attain large size. They start bearing when young and continue annually. Leading commercial and canning pear. Ripens September and October.

CLAPP'S FAVORITE. Precedes Bartlett, which it resembles in size, shape, color and flavor. The first Pear on the market. Large, pale lemon-yellow fruit with brown dots. Fine-textured, juicy, buttery flesh with a rich, sweet, delicate vinous flavor. Hardy and productive. Thrives where other varieties fail. Ripens August 15 to 20.

SECKEL. For eating fresh and pickling. Medium size; skin rich yellowish brown with deep brownish red cheek when fully ripe. Flesh fine grained, juicy, sweet. Resistant to blight; very productive and hardy. Plant in fertile soils. Ripens September and October.

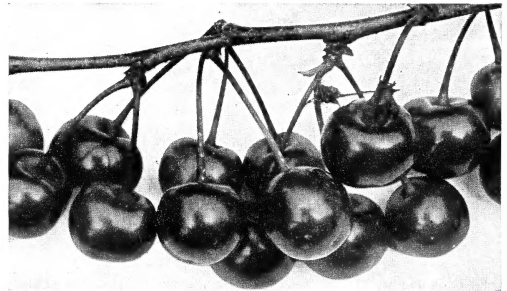
If prepaid and Express Collect items are shipped together, entire shipment is Express Collect.

5-in-One APPLE

(5 varieties grafted on one tree)

(1) Red Rome Beauty, (2) Yellow Delicious, (3) Lodi, (4) Cortland, (5) Red McIntosh. Plant several of these novel trees for beauty, shade, and for fruit maturing over a long period.

4 to 6 ft., well branched. Postpaid, only \$3.75 each



STANDARD CHERRY

4 to 6 ft., 2-yr. Cherries 1 to 6 each \$3.15 **7 or more each \$2.75**
 Postpaid Exp. Coll.

SOUR CHERRY

LARGE MONTMORENCY. Good bearer. Bright clear red, good size, fine flavor. Eat right off the tree. Makes excellent pies and other desserts. Ripens July 15.

SWEET CHERRIES

Two or more Sweet Cherries must be planted for pollination.

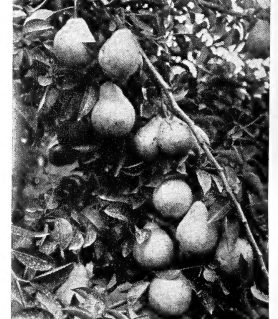
BLACK TARTARIAN. Purplish black. Juicy; rich flavor.

NAPOLEON. Yellow. Flesh firm; flavor rich and sweet.

WINDSOR. Pinkish flesh; almost black skin. Large, juicy, firm.



PEACH



PEAR

BERRIES

All items on this page are postpaid except Jumbo Blueberries

BLUEBERRIES

We are offering two (2) each of the strongest bearing varieties; you are assured of a continuous crop throughout the summer. Bearing-age plants will produce fruit next year.

Healthy, vigorous Musser Quality Blueberries, 12 to 18 inches

6 2-YEAR PLANTS \$7.95

BEARING AGE SPECIAL No. 12

Blueberries, same as above, but large (18 to 24 inches), 3-year stock, which is bearing age. These plants will begin producing fruit the following year.

6 BEARING-AGE BLUEBERRIES \$11.95

"JUMBO" BLUEBERRY GARDEN

Selected Heavy Bushes, 2 to 3 ft.

Quicker returns, larger harvests, the largest plants for transplanting.

6 2 to 3 ft., HEAVY BRANCHES \$15.95
Shipped Express Collect

BLUEBERRIES

STRAWBERRIES

This is an ideal, balanced collection, enough to plant twelve 25-foot rows. All Strawberries are shipped postpaid

100 Early (2 varieties)	50 Early (2 varieties)
50 Midseason	25 Midseason
50 Late	25 Late

200 PLANTS \$7.95 100 PLANTS \$4.75

STRAWBERRIES

RASPBERRIES

Your own plantings of Raspberries will bring that dainty, "fresh-off-the-vine" quality right to your table.

MORRISON. 1 Yr., No. 1	12	25	50	100
Best new black.	\$3.45	\$4.95	\$7.95	\$13.95
INDIAN SUMMER. 1 Yr., No. 1 . . .				
The best red everbearer.				
LATHAM. 1 Yr., No. 1	3.95	5.95	9.95	16.75
Most popular and widely planted red Raspberry.				
SEPTEMBER. New red everbearer.	7.95	11.95		
Early. Superior quality.				

LATHAM RASPBERRIES

Musser FLOWERING TREES

No C.O.D.'s. All stock on this page must be paid for in full with order. SHIPPED POSTPAID.

- PINK FLOWERING DOGWOOD** 2 to 3 ft. **Each \$3.95**
Outstanding among ornamental trees. A profusion of showy, rose-colored blossoms in spring. Deep red foliage in fall. Grows 15 to 20 feet tall.
- WHITE FLOWERING DOGWOOD** 3 to 4 ft. **3.25**
One of the most beautiful of all spreading-flowering trees. Lovely four-petaled white blooms are borne on spreading branches early in spring. Leaves turn brilliant red in fall. Valuable when used in lawn border or as specimen plants. Unsurpassed for naturalizing effect. Grows 15 to 20 feet tall.
- SAUCER MAGNOLIA** 2 to 3 ft. **4.95**
One of the most hardy of the Magnolias. Large, fragrant, rose-colored flowers cover the tree in early spring. Blooms when very small. Select a sheltered location so flower buds will not be injured by late frosts. Grows 10 to 15 feet tall. Blooming size.
- BECHTEL'S DOUBLE FLOWERING CRAB** 3 to 4 ft. **3.25**
This choice Crab has endeared itself to many growers because of its spectacular display of large, double, rose-like flowers in spring which completely hide the branches. Blooms every year. In general it resembles an apple tree but is much smaller and finer branched. It grows in many locations and benefits from the same care given apple trees.
- RED FLOWERING CRAB (Malus floribunda)** 4 to 5 ft. **3.25**
This small tree is round topped, with single carmine buds that change to pink and then white. Very heavy producer of small, blood-red fruit. Will stand severe winters and drought. Grows 15 to 20 feet.
- TREE WISTERIA** 3 to 4 ft. **5.75**
No more lovely sight can be imagined than a Tree Wisteria in bloom. The purplish blue flowers completely cover the tree during May, transforming it into sheer beauty. In formal gardens it is indispensable. On the lawn it develops into beautiful specimens and lives for generations, increasing in beauty and dignity each successive season. Grafted, sure to bloom; balled in peat.
- PINK FLOWERING CHERRY, Kwanzan** 3 to 4 ft. **3.95**
A low tree, growing to 6 feet. It makes a striking appearance on the lawn because of its unique form and is especially attractive when covered with showy clusters of dainty, rose-pink flowers before the leaves appear in the spring.
- JUDAS TREE OR REDBUD** 3 to 4 ft. **Each \$2.75**
Fable tells us that when Judas betrayed Christ this tree immediately dripped all over with drops of blood, and that is the way it looks today when its blooms first come out. Later they turn to beautiful rosy purple. Blooms in April, before the leaves appear. 15 to 20 feet tall at maturity.
- PURPLE FRINGE (Smoke Tree)** 2 to 3 ft. **2.50**
A tree much admired for the curious fringed or hair-like flowers that cover it in midsummer and give a mystic, cloudy effect to the whole tree. Handsome foliage adds its share of beauty. Likes plenty of sunshine and light, well-drained soil. Grows to a height of 10 to 12 feet, and its spreading habit requires considerable space.
- TREE HYDRANGEA** 3 to 4 ft. **3.95**
Large pyramidal trusses of pure snow-white blooms appear in early August. As fall approaches they change to a luminous pink. At this stage they may be cut for all-winter dry bouquets. Flowers measure a foot long and 6 to 8 inches wide. A low-growing tree, standing not more than 4 to 6 feet in height.
- PAUL'S SCARLET HAWTHORN** 4 to 5 ft. **3.75**
Lovely flowering shrubs or small tree, growing about 15 feet tall, with spreading branches. The leaves are broad, the 3 to 5 lobes much toothed. The large clusters of double, brilliant rosy red flowers are produced in immense quantities. Fruits are scarlet. Well suited to the small yard, where a maple would be too large or create too much shade.
- RED JAPANESE MAPLE** 1 to 1½ ft. **6.50**
Grows no taller than 8 to 10 feet. Foliage is startling crimson all summer. Makes an excellent specimen for yard or formal garden. Has best color when in full sun, but will tolerate moderate shade. Trees moss balled.
- ALMEY FLOWERING CRAB** 4 to 5 ft. **3.95**
An outstanding Flowering Crab that bears dollar-size flowers of rich, glistening, fiery crimson in spring. This graceful tree thrives in poor soil and is perfectly hardy in cold sections. Only 12 to 15 feet tall but vigorous. Attains its mature height quite rapidly and blooms young. It thrives in full sun or partial shade. Recommended for small gardens. Profuse, small scarlet fruits cling to the branches long after the leaves have dropped.

\$1.00 Discount On any group of 4 Flowering Trees listed on this page, deduct \$1.00 from total list price for 4 trees.

Flowering Shrubs

2-Year, No. 1 Blooming Size, 1½ to 2 feet tall. Hardy, well-branched shrubs, shipped postpaid

CALYCANTHUS (Sweet-Scented Shrub)

Many know it as the Carolina Allspice. The handsome, bronze-chocolate flowers produced in June are most entrancing, because of their spicy fragrance. Odd-looking pods develop, which are filled with brown, aromatic seeds. Glossy corrugated foliage adds to its unusual appearance. Grows 4 to 6 feet tall and spreads over an area equally broad.

DOUBLE GOLDEN KERRIA (Globe-Flower)

Button-like, golden flowers cover the bush all summer. The very dense, "sawtooth" foliage serves as an interesting background. In winter the light green, twiggy stems are very decorative. Grows 3 to 5 feet tall.

RED FLOWERING QUINCE

Covered with masses of semi-double, brilliant scarlet flowers in spring, even before the attractive, shiny green leaves appear. This 3 to 5-foot shrub is a "must" in landscaping.

BEAUTY-BUSH

A magnificent flowering shrub, growing to 7 feet. Upright-growing branches arch gracefully outward. During June they are weighted down with pink, bell-like flowers. Hardy; any soil.

DOUBLE MOCK-ORANGE

Pure white, sweet-scented, double, 2-in. flowers in May and June. Will tolerate smoke and other hard city conditions. Grows to an ultimate height of 4 to 6 feet.

SWEET HONEYSUCKLE (Lonicera tatarica)

Dainty, small, pink, trumpet-shaped flowers in May, followed by a profusion of red berries. Makes a large shrub, 6 to 8 feet in both height and width. Excellent for screening and specimen planting. Grows in the poorest soil.

CARDINAL SHRUB (Weigela Vaniceki)

Blooms in spring, summer and fall. Plants set out in fall will bloom the next season. Grows 6 feet tall. Produces large, trumpet-shaped, rosy red flowers.

PEEGEE HYDRANGEA

A tall, stately shrub growing 4 feet in height. Branches bend over with giant, cone-shaped flowers which are white at first, then pink, and late in fall turn to copper and bronze. When cut, they last for weeks indoors.

FORSYTHIA, Spring Glory

A new Forsythia which bears masses of large yellow blooms. Canes grow erect, with gracefully drooping tips. Hardy in all sections; ordinary soil.

RED SPIRAEA

A choice, low-growing shrub, distinctive in style and form. Masses of showy, bright crimson flower clusters from July to frost. Ultimate height 18 to 24 inches.

Shrub Collection

YOUR CHOICE OF ANY SHRUBS LISTED

Hardy, 1½ to 2 ft. No C. O. D.

6 Postpaid \$7.50 FOR

3 for \$4.75; 10 for \$10.25 (No orders for less than 3)

ENJOY THE
HOME
GARDENER'S
MAGAZINE

POPULAR GARDENING

Read by over 500,000
gardeners each
month.

NOW!

More gardening
pleasure for you and
save up to \$1.79 with this offer

Let *Popular Gardening* — the handsomest
and most helpful of magazines — keep you
abreast of the latest gardening techniques!

Each month, the nation's leading
horticulturists bring you the latest news
and ideas in the world of flowers and plants
— help you fully develop your gardening talents!



SUBSCRIBE NOW!

Use Order Form on Reverse Side:

SPECIAL RATES

6 Issues only \$1.00 13 Issues only \$2.00

POPULAR GARDENING tells you . . .

- How to enjoy your gardening twelve months a year!
- How to grow the finest varieties of flowers, plants!
- How to keep plant pests under effective control!
- How to plant, when to plant, where to plant!
- How to be best gardener in your community!



MAIL THIS BIG MONEY-SAVING OFFER NOW!

MAIL TO POPULAR GARDENING 530 Fifth Avenue
New York 36, N.Y.

25c extra in Canada

13 big issues \$2

6 big issues \$1

Name

Address

City Zone State

Send check, money order or cash — AT OUR RISK! Check here if already a subscriber.

Recommended by **MUSSER FORESTS, INC.**

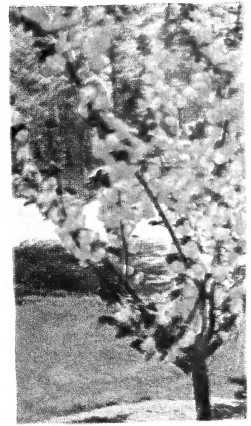
Flowering Trees



PINK FLOWERING DOGWOOD



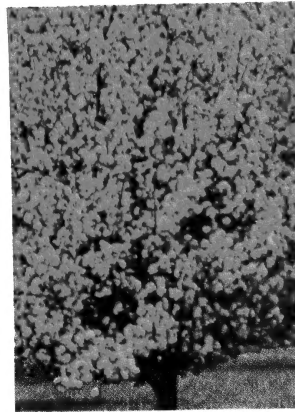
ALMEY CRAB



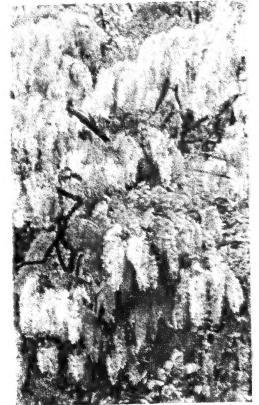
FLOWERING CHERRY



RED JAPANESE MAPLE

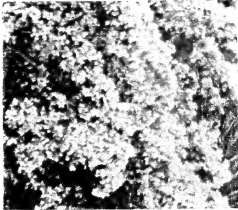


RED FLOWERING CRAB



TREE WISTERIA

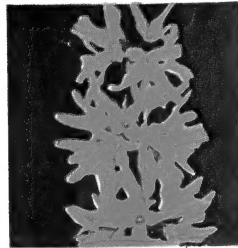
Flowering Shrubs



BEAUTY BUSH



RED SPIREA



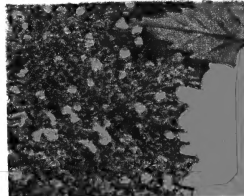
FORSYTHIA



HYDRANGEA



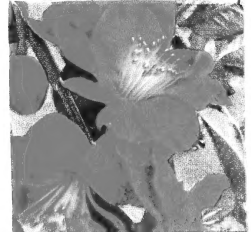
CARDINAL SHRUB



GOLDEN KERRIA



CALYCANTHUS



RED FLOWERING QUINCE

PATENTED ROSES

Hybrid Teas and Floribundas

Hardy Northern-Grown — Best No. 1 Quality

GOLDEN FLEECE



We offer here a half-dozen of the very finest Rose varieties that are to be found anywhere. Roses are no longer "prima donnas" that must be coaxed to produce a bloom or two. Try some of today's Roses and enjoy the improvements made by plant breeders.

Not only that—but we send you these Rose bushes in a super-wrap package that assures you they will arrive in perfect condition. Give your Roses a chance—give yourself a chance—buy in the super-wrap package and see the difference.

CHRYSLER IMPERIAL. Richest crimson-red blooms of imposing size and perfect, high-pointed shape. Long, tapering, velvety buds on strong stems, deepening in color as they open. A strong, compact bush. Plant Pat. 1167.

NEW YORKER. Immense blooms of brilliant scarlet. Buds of perfect form and texture, opening slowly to 6-inch flowers. Hardy, healthy, free flowering. Plant Pat. 823.

PEACE. Flowers and plant are huge, erect and wonderful. The color is yellow in various tones, edged and flushed with pink, changing from day to day. Very free blooming, tall and hardy. Plant Pat. 591.

TIFFANY. Long-pointed buds of deep pink. Double, fragrant blooms with thick, velvety petals. Beautiful for cutting. Plant Pat. 1304.

GOLDEN FLEECE. A Floribunda Rose with buds of lively lacy gold color, becoming canary-yellow. Graceful clusters, with as many as 20 on a stem. Strong and bushy, blooming all summer. Plant Pat. 1312.

SPARTAN. Extra hardy and vigorous Floribunda. Glowing burnt-orange, opening to reddish coral—a lovely warm shade. Plant Pat. 1357.

Any 6 for

\$14.50

POSTPAID

Super-Wrapped

\$2.75 each

NEW YORKER

SPARTAN

MINIATURE ROSES



These are the little darlings of the Rose family—tiny plants that stay tiny all through their life. They make adorable novelties indoors when used as pot plants, and they are also very charming and useful as a border around the Rose garden. As a low hedge or edging along a walk they are in great demand.

JACKIE. Very double flowers only an inch in diameter. Soft yellow, changing to white. 12 inches tall.

ROULETTI. Little double rose-pink flowers on a 4 to 6-inch plant. Easy to grow.

OAKINGTON RUBY. Deep carmine buds, opening to rich ruby-crimson. Not over 12 inches in height.

SNOWFLAKES. Exquisite tiny white flowers on a plant only 6 or 8 inches tall.



HEDGE OF ROSA ROULETTI

MINIATURE ROSES

Any

3 for \$2.75;

12 for \$10.00

25 for \$18.75

POSTPAID

(Miniatures are not Super-Wrapped)

STANDARD ROSES

Hybrid Teas

Hardy Northern-Grown—Best No. 1 Quality



CRIMSON GLORY



COUNTESS VANDAL



Super-Wrap Package used for shipping all our Roses except the Miniatures.



CONDESA DE SASTAGO

Here is a choice selection of six 2-year, No. 1, field-grown Rose bushes, including one hardy climber—Blaze. All are ever-blooming varieties that start early in the season and continue blooming profusely all summer.

We know these strong, healthy plants will give you complete satisfaction. We highly recommend them as reliable ever-blooming Roses. And remember—each one comes to you in a super-wrap package that protects it every minute until you open it.

CRIMSON GLORY. If you like your Roses red and fragrant, Crimson Glory is for you. It's velvety, it's well shaped, it's glorious. Don't miss it.

COUNTESS VANDAL. An elegant Rose for cutting, in coppery pink tones, darker on the reverse. The petals roll back as they open, just as you see them in the picture. Truly an enchanting flower.

CONDESA DE SASTAGO. Gay colors to go with its Spanish name—red with yellow on the outside of the petals. Bushy and free blooming, this is one of the best loved of the bicolor Roses.

MRS. PIERRE S. DU PONT. Golden yellow flowers develop from reddish gold buds. A rather low-growing plant with rich dark foliage.

K. A. VIKTORIA. Another fine variety for cutting, with nice fragrance and good long stems. The flowers are white with a hint of lemon color in the center.

BLAZE. The ever-blooming blazing scarlet climber that flares across the countryside in early summer and then keeps repeating until frost. A superb sight on fences, walls, anywhere.

Any 6

No. 1, Field-Grown

Standard Roses

\$8.75

POSTPAID

Any 3 for \$4.65
Any 12 for \$16.50

For FLORIBUNDA ROSES and CLIMBING ROSES see page 24

CLIMBING ROSE, BLAZE



K. A. VIKTORIA

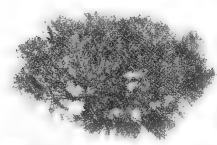


MRS. PIERRE S. DU PONT

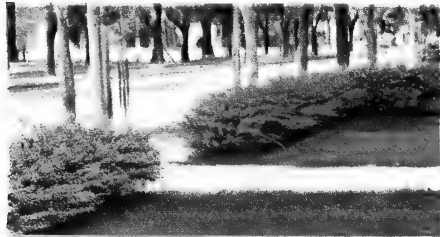
HEDGES and WINDBREAKS



HEMLOCK also for a beautiful, dense HIGH hedge. Gives privacy, stops winter winds and diverts summer breezes where needed. This hedge is 10 years old. Sun or shade.



MUGHO PINE makes a dense, spreading hedge, hardy, may be sheared to any form.



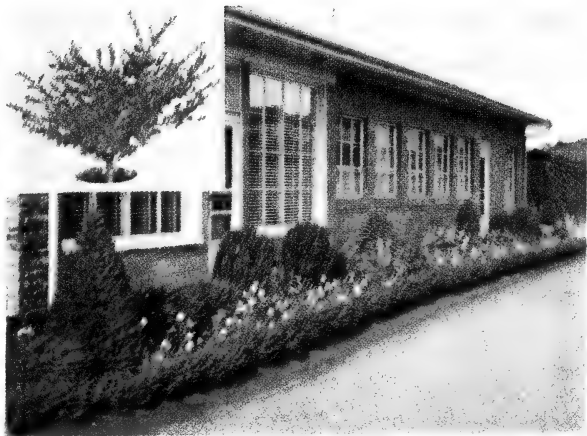
The well-known **BARBERRY** always makes a satisfactory hedge, sheared or natural. Brilliant red berries in fall.



White Pine, Austrian Pine and Scotch Pine are among the faster growing evergreens for **WINDBREAKS**. Plant double rows about 6 feet apart with offset for spacing best protection.



LOMBARDY POPLAR is well known as an effective screen for buildings, accent for entrance drives, or a background where terrain lacks novelty. Grows rapidly and thrives readily.



Musser Forests General Offices

Featured in the foreground above is an attractive **ILEX JAPANESE HOLLY** hedge. Ilex has an unusually good ornamental form, twice as broad as high. Withstands shearing well. Also excellent as individual specimen plant



This **HEMLOCK** hedge has been kept to height shown for 17 years. Hemlock is very versatile, may be maintained at any desired height. Sun or shade.



A **YEW HEDGE** is among the best. Thick growth and lustrous, dark green foliage. Can be sheared to any form

HEDGES

Many types of nursery stock can be sheared and developed into beautiful, lasting hedges, since they can be kept at almost any height for years. Start with small plants and shear the new tender growth each year to the desired form and height.

MUGHO PINE—Dwarf Pine Hedge		Per 100	Per 1000
Very best of true dwarf. Compact, low-growing ornamental Pine.			
4-yr. Transplants	4- 7"	\$20.00	xxxx
5-yr. Transplants	6-12"	25.00	xxxx

CANADIAN HEMLOCK—One of the best evergreen hedges.			
Lacy, graceful growing habit. Can be sheared to any size.			
3-yr. Seedlings	4- 8"	16.00	\$80.00
3-yr. Seedlings	8-12"	24.00	120.00
4- and 5-yr. Transplants	8-14"	45.00	xxxx
5-yr. Twice Transplants	12-15"	1.25	EACH

WHITE PINE—Hedge or Windbreak			
Fast growing, soft, dense hedge, easily adaptable to pruning—can be held to 5 to 8 ft. height for years.			
3-yr. Seedlings	4- 8"	7.00	35.00
3-yr. Seedlings	6-12"	11.00	55.00

AMERICAN ARBORVITAE			
Popular for hedges and ornamentals.			
3-yr. Seedlings	6- 8"	8.00	40.00

JAPANESE YEW—Transplanted Rooted Cuttings			
True strains from rooted cuttings.			
Taxus Cuspidata—Spreading			
1-yr. Transplants	5- 6"	20.00	150.00
2-yr. Transplants	6- 8"	30.00	250.00
2-yr. Transplants	8-12"	40.00	350.00
5-yr. Twice Transplants	spread 12-15"	2.50	EACH

JAPANESE YEW—Grown from seed			
Taxus Cuspidata Capitata—Upright			
Pyramidal			
Extra nice plants; excellent, fibrous roots.			
2-yr. Seedlings	(2-0) 3- 6"	20.00	150.00
4-yr. Transplants	(2-2) 6-10"	40.00	xxxx

JUNIPER—Blue Pfitzer			
2-yr. Transplants—field grown	6-10"	65.00	xxxx
2-yr. Transplants—field grown	10-15"	90.00	xxxx
Three Times Transplants	spread 15-18"	2.25	EACH

SPACING FOR HEDGES. LOW Hedge, 8-10 in. apart, or double rows 12 in. apart—MEDIUM Hedge, 3 to 4 feet, plant 1 to 2 feet apart—TALL Hedge, plant 3 to 5 feet apart.

JAPANESE HOLLY		Per 100	Per 1000
Excellent evergreen shrub and hedge.			
Ilex Convexa—Transplanted Rooted Cuttings			
1-yr. Transplants	4- 6"	\$20.00	\$175.00

Ilex Rotundifolia—Transplanted Rooted Cuttings			
1-yr. Transplants	5- 6"	20.00	175.00
2-yr. Transplants	6- 8"	30.00	250.00
*4-yr. Twice Transplants	12-15"	1.75	EACH

AMERICAN HOLLY—Rooted Cuttings			
Ilex Opaca			
1-yr. Transplants		50.00	xxxx

PRIVET, Amur River (Hardy)			
Hardest and best for northeastern conditions. Will grow 10 feet but may be pruned to any height or form. Branches upright, foliage oval or oblong; made denser by pruning. Hardy, almost evergreen.			
Seedlings	12-18"	8.00	40.00
*Transplants	12-18"	16.00	80.00
*Transplants	18-24"	20.00	120.00

PRIVET, Hardy California (Ibolum)			
These plants have glossy green leaves, almost evergreen. Produces clusters of creamy white flowers in June—dark berries in fall. Useful for hedges or screening purposes. Not particular as to soil and well adapted to withstand shade and city conditions.			
2 branches	6-12"	16.00	80.00
2 branches	12-18"	18.00	90.00
3 branches	12-18"	25.00	130.00

BARBERRY—Red			
Unusually good red color. Excellent hedge plants. Red leaves in summer, red berries in fall-winter.			
2-yr. Seedlings	6-12"	12.00	xxxx

ROSA MULTIFLORA—Living Fence			
Excellent wild life shelter and food.			
Graded 3 mm. and up	10-18"	10.00	50.00

WINDBREAKS

For an ideal windbreak select a fast growing tree. White Pine, Austrian Pine and Scotch Pine are among the faster growing evergreens that can be used for this purpose.

NORWAY SPRUCE—Fast growing type		Per 100	Per 1000
4-yr. Transplants	8-12"	\$16.00	\$80.00
4-yr. Transplants	12-18"	35.00	xxxx

WHITE SPRUCE			
4-yr. Transplants	8-12"	18.00	90.00
5-yr. Transplants	12-18"	30.00	xxxx

AMERICAN RED PINE			
Fast growing, sturdy windbreak especially fine where protection in height is needed.			
3-yr. Seedlings	6-12"	9.00	45.00
4-yr. Transplants	8-12"	20.00	100.00

AUSTRIAN PINE			
3-yr. Seedlings	8-14"	10.00	50.00

WHITE PINE			
Fast growing, soft, dense hedge, easily adaptable to pruning—can be held to 5 to 8 ft. height for years.			
3-yr. Seedlings	6-12"	11.00	55.00

SCOTCH PINE		Per 100	Per 1000
3-yr. Seedlings	6-12"	\$15.00	\$75.00
4-yr. Transplants	8-14"	25.00	125.00

CHINESE ELM			
Rapid grower with small, dense foliage. Excellent for tall hedge or windbreak. Stands intense cold and extreme heat.			
	12-18"	7.00	35.00
	18-24"	10.00	50.00

LOMBARDY POPLAR			
Ideal for use as screen or windbreak. Thrives in wide range of soil and climatic conditions. Grows unusually fast, requires no pruning.			
	12-18"	10.00	50.00
	18-24"	12.00	60.00

TULIP POPLAR			
One of the largest, most valuable deciduous trees for timber and ornamentals. Glossy, fiddle-shaped leaves. Large greenish-yellow and orange flowers. Very symmetrical.			
	6-12"	14.00	65.00
	12-18"	18.00	85.00

PIN OAK			
One of the best shade trees known; of rapid growth. Leaves deeply cut and colors beautiful in autumn. Transplants readily.			
	6-12"	12.00	xxxx
	12-18"	30.00	xxxx

For best protection, plant double rows about 6 feet apart with offset spacing.

Musser SHADE TREES

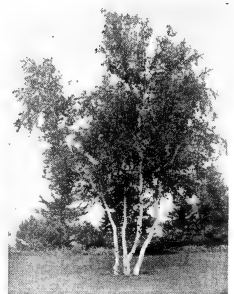
FINEST QUALITY



CHINESE CHESTNUT



MORaine LOCUST



WHITE BIRCH CLUMP

SIZES LISTED ARE BEST FOR SUCCESSFUL TRANSPLANTING

Sorry, no C.O.D.'s. All stock on this page must be paid in full with order.
Shipped Express Charges Collect.

	Actual Size	Each	Per 3
PIN OAK	4-5 ft.	\$3.75	\$9.75
Forms a symmetrical, pyramidal head with long pendulous branches. The foliage is deeply cut and assumes a brilliant red autumn color. Because of rapid growth, it is much used for avenues and lawn specimens.			
WHITE BIRCH Clump trees, 3 to 4 stems.....	3-4 ft.	3.95	9.95
One of the most beautiful novelties in shade trees. When mature, bark is white and the leaves are a fine light green. Plant several in each location for a rare and picturesque clump, winning the admiration of your friends and neighbors.			
CHINESE CHESTNUT (Blight resistant) Whips to lightly branched.....	3-5 ft.	2.00	5.00
Heavy, well-branched trees	3-4 ft.	3.75	9.75
Will bear large, sweet, delicious nuts 2 years after planting. Very fast growing. Valuable as ornamental and for shade, as well as for fruit. Plant 2 or more for pollination. Grows 30 to 40 feet tall. See photo above.			
WEeping WILLOW, Wisconsin	6-8 ft.	3.95	9.95
Very rapid-growing tree with graceful drooping branches. Will succeed in any location but prefers moist soil. Especially effective near pools or river banks, along drives or as specimen plants. Frequent cutting back gives a thicker growth of bright green twigs. Grows 25 to 30 feet tall. Illustrated at left.			
NORWAY MAPLE	6-8 ft.	5.50	14.75
One of the best trees for street planting or for lawn specimens where good form and shade are needed. Its dense leaves are rich green and are held on tree about two weeks longer than other Maples. Grows 50 to 60 feet tall. See photo at left.			
SILVER MAPLE	5-6 ft.	3.75	9.75
Most rapid grower of all Maples. A large, spreading tree which, at maturity, has a height of 60 to 70 feet. A cut leaf with a silvery cast, and also a silvery bark. Sap is good for sugar making.			
SUGAR MAPLE (Hard Maple)	6-8 ft.	5.50	15.75
Brilliant scarlet, orange and yellow foliage in fall. Mature trees are the source of delicious maple sugar from sap in spring. Handsome form. Photo on next page.			
CRIMSON KING MAPLE	5-6 ft.	6.50	18.50
You will want to be one of the first to own this new tree. It is a beautiful form of Schwedler Maple, originating in Europe. Like the Schwedler, it develops a rounded, compact top of unusual symmetry, but differs in having foliage of deep purple-crimson all through the growing months.			
CUT-LEAF WEeping BIRCH (Silver Birch)	4-5 ft.	4.50	12.75
Graceful white-barked tree with delicate drooping branches. One of the few shade trees under which grass will grow. The white bark, which develops a year or two after planting, is beautiful in all seasons. Grows 20 to 30 feet tall.			
LOMBARDY POPLAR	5-6 ft.	1.50	4.00
Tall columnar tree, ideal for use as screen or windbreak. Thrives in wide range of soil and climatic conditions. Grows unusually fast; requires no pruning. Grows 60 to 80 feet. Photograph is shown on the next page.			
CHINESE ELM	6-8 ft.	4.25	11.50
For quick shade. A very rapid grower with small, dense foliage. Excellent for tall hedge or windbreak. Stands intense cold and extreme heat remarkably well. Excellent shade in 5 short years. Grows 30 to 40 feet.			
SUNBURST GOLD LOCUST (Trade-marked)	4-5 ft.	6.75	18.50
(Plant Pat. 1313.) New shade tree with brightest golden bronze foliage on 8 to 10 inches of branch tips. Completely free of thorns and resistant to insects. Well formed, with spreading habit; 25 to 35 feet. Supply this year definitely limited.			
MORaine LOCUST (Trade-marked)	5-6 ft.	6.50	18.50
(Plant Pat. 836.) This is a vigorous, fast-growing, seedless tree, shaped much like American Elm, but not susceptible to disease. A clean tree with no ugly, dangerous thorns and no seed pods. The leaves are so fine that, when falling, they practically disappear. Thrives in spite of smoke and soot, on all kinds of soil. Hard wooded; bends but rarely breaks or splits.			
BLACK WALNUT	3-4 ft.	3.75	9.75
Rich flavorful kernels. Does well in fertile, well-drained soil. Very hardy. Grows almost anywhere in the country. Produces annually large crops of nuts with rich, oily kernels of fine flavor. Fine for desserts, nut bread and confections. Tree grows 25 to 40 feet high; fast growing and long lived. Photo on next page.			



WEeping WILLOW



NORWAY MAPLE



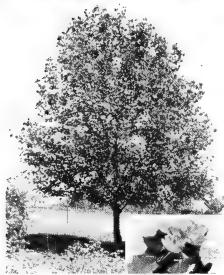
SUNBURST LOCUST

SHADE and HARDWOOD SEEDLINGS

SHIPPED PARCEL POST or EXPRESS CHARGES COLLECT

50 sold at the 100 rate except where specified

	Per 100	Per 1000
WHITE BIRCH	6-12" \$8.00	\$40.00
See description on previous page.	12-24" 12.00	60.00
CHINESE CHESTNUT (Blight Resistant)	10-18" 30.00	150.00
(Ching Chow Strain.) Will bear large, sweet delicious nuts. Very fast growing. Valuable as Ornamental and for Shade, as well as for Fruit. Grows 30 to 40 feet tall. May be ordered in lots of 10 at the 100 rate.	18-30" 40.00	200.00
LOMBARDY POPLAR	6-12" 8.00	40.00
Tall columnar tree, ideal for use as screen or windbreak when planted 2 to 3 feet apart. Seedling stock, variety described on page 12. Photo at right.	12-18" 10.00	50.00
	18-24" 12.00	60.00
WHITE FLOWERING DOGWOOD	4- 8" 9.00	xxxx
One of the most beautiful of small trees. Handsome in early spring with its white-petaled flowers and again in fall with bright red fruit and gorgeous leaf colorings.	12-18" 12.00	65.00
HONEY LOCUST (Thornless) and BLACK LOCUST	6-12" 6.00	30.00
Tall deciduous tree for shade or lawn specimen. Small fragrant, greenish flowers in early summer and followed by large, glossy brown ornamental pods in the fall. Attracts bees. Photo at right.	12-18" 9.00	45.00
WHITE OAK	6-10" 12.00	60.00
Monarch of deciduous trees. Splendid for lawn or street use. Disease resistant. Dark red autumn coloring.		
RED OAK	6-18" 12.00	60.00
Northern, hardy, rapid-growing timber and shade tree. Dark red fall foliage.		
PIN OAK	6-12" 12.00	80.00
See description on page 12. Lots of 10 at the 100 rate.	12-18" 30.00	xxxx
CHINESE ELM	6-12" 5.00	25.00
Seedlings of variety described on page 12. Widely planted for fast-growing hedges.	12-18" 7.00	35.00
	18-24" 10.00	50.00
AMERICAN ELM	10-20" 6.00	30.00
One of the best loved of our native American trees. Straight trunk, branching into graceful vase-shaped head.		
BLACK WALNUT	6-12" 10.00	50.00
Seedling stock of variety described on page 12. Photo at left.		
WHITE ASH or GREEN ASH	6-10" 5.00	25.00
Easy to grow. Tall oval shape permits grass to grow beneath its branches. Brilliant yellow autumn foliage.	12-18" 8.00	40.00
NORWAY MAPLE	4- 8" 12.00	xxxx
Seedling stock of variety described on page 12.	12-16" 20.00	xxxx
SUGAR MAPLE (Hard Maple)	6-12" 10.00	50.00
Mature trees provide maple sugar products from sap in spring. Brilliant scarlet autumn foliage. Fast growing.	12-18" 20.00	100.00
SILVER MAPLE	6-12" 6.00	30.00
Fastest growing Maple. Spreading tree growing to 60 to 70 feet. A cut leaf with silvery cast, also silvery bark.	12-18" 9.00	45.00
SCARLET MAPLE	6-12" 10.00	50.00
A large-growing Maple tree, known for its attractive red autumn leaves. Does well in moist or damp places.	12-18" 14.00	70.00
SYCAMORE	6-12" 6.00	30.00
(Buttonwood; American Plane Tree.) Tall, picturesque tree, with white peeling bark and unique branch structure.	12-18" 9.00	45.00
TULIP POPLAR	6-12" 14.00	65.00
One of the largest, most valuable deciduous trees for timber and ornamentals. Glossy, fiddle-shaped leaves. Large greenish-yellow and orange flowers. Very symmetrical.	12-18" 18.00	85.00
LITTLE LEAF LINDEN	6-10" 10.00	xxxx
A compact, densely pyramidal tree, giving perfect shade. A fine street or home tree that withstands adverse city conditions.		
WEeping WILLOW-Green or yellow bark	6-12" 15.00	xxxx
(Grown from cuttings) Description on page 12.	12-18" 20.00	xxxx



TULIP POPLAR



WHITE OAK



SUGAR MAPLE



BLACK WALNUT



CHINESE CHESTNUT



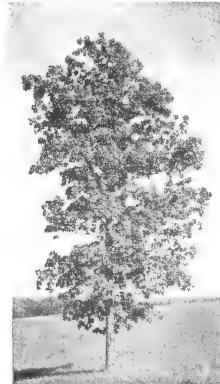
LOMBARDY POPLAR



HONEY LOCUST



PIN OAK



SHELLBARK HICKORY



Sturdy Top Growth

Fibrous Roots

Musser's Spring 1958 Wholesale Planting List

MUSSER FORESTS, Inc.
INDIANA, PENNSYLVANIA

Our Nursery Sales Office is open weekdays from 8:00 A.M. to 4:30 P.M. Open Sundays during the shipping season, March 15 to May 15 only—10:00 A.M. to 4:00 P.M. Located 6 miles north of Indiana on Route 119. Telephone INdiana 5-5686.

There IS a Difference!



At left, a bundle of 15 ordinary Scotch Pine 2-yr. seedlings. At right, 15 of our own 2-yr. Special Strain Scotch Pine seedlings, 5-10 in.

TERMS No order can be accepted for less than units of fifty (50) of one variety and size except on items marked with an asterisk (*). Fifty (50) of one kind and size sold at 100 rate, 500 at 1000 rate, shipped, f.o.b. Indiana, Pa., by express or parcel post collect, whichever is cheaper (unless otherwise noted). If charges prepaid items and charges collect items are shipped together, entire shipment is charge collect. Prices subject to change without notice.

If your stock is not received in satisfactory condition, please advise immediately. We will make every effort to fill your order exactly as you want it, but if we are sold out of a variety you ordered, we may substitute a similar variety, of equal or greater value, if you indicate your permission on our order blank.

Orders may be booked with one-half cash with order, balance C.O.D. Fifty (50) cents packing charge on less than 1000.

All prices NET, no discounts for cash or quantity. WE PACK AND BOX FREE in 1000 lots. We do our best to ship stock to arrive at destination on a specified date. Orders accepted on this basis. However, due to varied weather conditions, during our shipping season, we cannot guarantee always to have trees at destination ON A DEFINITE DATE.

SHIPPING SEASON

will begin about March 15, weather permitting, and continue until June 1. Orders will be filled as rapidly as possible from then on. All stock shipped in a dormant condition and may be safely transplanted in any part of the country, regardless of your season.

PARTIAL SHIPMENTS

It may be necessary to ship Roses, Berries, Fruit, Flowering and Shade Trees at a time different from other listed stock. You may receive several shipments before your order is completed. This notice is to save you unnecessary correspondence.

Number of Trees Required per acre			
For different spacings			
For Christmas Tree planting, estimate 2000 trees per acre.			
3 x 3	4,840	
4 x 4	2,722	
5 x 5	1,742	

The figures 2-0, 2-1, 2-2-1 indicate the number of years the trees have been in the seed beds and the transplant beds. Thus the sum of all figures is the total age of the tree.

Evergreen Seedlings-Transplants

SPECIAL STRAIN SCOTCH PINE
Very best Christmas tree strain. Grown from seed collected by our own men from selected parent trees. Exceptionally healthy, sturdy, straight-stemmed specimens, with rich color.

		Per 100	Per 1000
2-yr. Seedlings.....(2-0)	2-4"	\$4.00	\$20.00
2-yr. Seedlings.....(2-0)	3-6"	5.00	25.00
2-yr. Seedlings.....(2-0)	4-8"	7.00	35.00
2-yr. Seedlings.....(2-0)	5-10"	9.00	45.00
3-yr. Seedlings.....(3-0)	5-10"	13.00	65.00
3-yr. Seedlings.....(3-0)	6-12"	15.00	75.00
4-yr. Transplants.....(2-2)	5-10"	20.00	100.00
4-yr. Transplants.....(2-2)	8-14"	25.00	125.00

WHITE PINE
One of the best timber species. Excellent windbreak and hedge. Very good Ornamental and Christmas tree.

2-yr. Seedlings.....(2-0)	3-6"	5.00	25.00
3-yr. Seedlings.....(3-0)	4-8"	7.00	35.00
3-yr. Seedlings.....(3-0)	6-12"	11.00	55.00

PONDEROSA PINE—Western Yellow Pine
Hardy, fast growing timber tree.

2-yr. Seedlings.....(2-0)	4-6"	7.50	35.00
3-yr. Seedlings.....(3-0)	8-12"	10.00	xxxx

MUGHO PINE—Pumilio Strain
Very best of true dwarf. Compact, low-growing Ornamental Pine.

3-yr. Seedlings.....(3-0)	2- 3"	5.00	25.00
3-yr. Seedlings.....(3-0)	3- 5"	8.00	40.00
4-yr. Transplants.....(3-1)	4- 7"	20.00	xxxx
5-yr. Transplants.....(3-2)	6-12"	25.00	xxxx

14 — Musser Forests, Inc.

AUSTRIAN PINE
Good timber species. A beautiful, dark green, long-needled Ornamental and Christmas tree, grown from selected seed from the Austrian Alpine region.

		Per 100	Per 1000
2-yr. Seedlings.....(2-0)	2-4"	\$4.00	\$20.00
2-yr. Seedlings.....(2-0)	3-6"	5.00	25.00
3-yr. Seedlings.....(3-0)	5-10"	8.00	40.00
3-yr. Seedlings.....(3-0)	8-14"	10.00	50.00

Both these items are excellent size for direct field planting.

AMERICAN RED PINE
Excellent timber and Christmas tree.

2-yr. Seedlings.....(2-0)	2-4"	4.00	20.00
2-yr. Seedlings.....(2-0)	3-5"	5.00	25.00
3-yr. Seedlings.....(3-0)	4-8"	7.00	35.00
3-yr. Seedlings.....(3-0)	6-12"	9.00	45.00
4-yr. Transplants.....(2-2)	8-12"	20.00	100.00
*7-yr. Twice Transplants...	18-24"	1.50 each	

Suitable for field planting.

JAPANESE BLACK PINE—Pinus Thunbergi
Light green needles, 4½ inches long. Hardy, valuable for use in exposed conditions along the seashore. Very fast growing.

2-yr. Seedlings.....(2-0)	4-6"	8.00	xxxx
---------------------------	------	------	------

WHITE SPRUCE
Similar to Norway Spruce except for its lighter color and slower growth rate.

2-yr. Seedlings.....(2-0)	2-4"	2.50	17.50
2-yr. Seedlings.....(2-0)	4-8"	5.00	25.00
3-yr. Seedlings.....(3-0)	5-10"	7.00	35.00

3-yr. Seedlings.....(3-0)	8-12"	9.00	45.00
4-yr. Transplants.....(3-1)	8-12"	18.00	90.00
5-yr. Transplants.....(3-2)	12-18"	30.00	xxxx

MUSSER EXCLUSIVE NORWAY SPRUCE — FAST GROWING

Grown from seed collected by our own men from selected trees. Exceptionally fast growing, straight-stemmed stock makes this strain especially desirable for Christmas trees, Ornamentals, and timber.

		Per 100	Per 1000
2-yr. Seedlings.....(2-0)	5-10"	\$7.00	\$35.00
3-yr. Seedlings.....(3-0)	8-12"	10.00	50.00
4-yr. Transplants.....(3-1)	8-12"	16.00	80.00
4-yr. Transplants.....(2-2)	10-14"	20.00	100.00
4-yr. Transplants.....(2-2)	12-18"	35.00	xxxx

Heavy stems.

NORWAY SPRUCE

2-yr. Seedlings.....(2-0)	2-4"	2.50	17.50
2-yr. Seedlings.....(2-0)	3-6"	5.00	25.00
3-yr. Seedlings.....(3-0)	4-8"	7.00	35.00
*7-yr. Twice Transplants.....	12-18"	1.00 EACH	
*8-yr. Twice Transplants.....	18-24"	1.50 EACH	
*8-yr. Three Times Trans.....	24-30"	2.50 EACH	

BLACK HILLS SPRUCE
Fine Ornamental. Most compact Spruce. Excellent Christmas tree.

2-yr. Seedlings.....(2-0)	2-4"	4.00	20.00
3-yr. Seedlings.....(3-0)	4-8"	7.00	35.00
4-yr. Seedlings.....(4-0)	5-10"	10.00	50.00
4-yr. Transplants.....(2-2)	5-10"	17.00	85.00
5-yr. Transplants.....(3-2)	8-12"	24.00	120.00

SERBIAN SPRUCE — Picea Omorika
Valuable Ornamental. Tall, symmetrical habit of growth, with very narrow branch spread. Needles ½- to ¾-inch long. Glossy green.

5-yr. Transplants.....(3-2)	8-14"	30.00	150.00
-----------------------------	-------	-------	--------

COLORADO BLUE SPRUCE
Excellent stock—finest in the country. One of the finest for Ornamental and Christmas tree use. Sturdy and compact in form; straight stems. Range in color from slightly blue-green to marvelous blue. The seed has been collected at very high cost from trees showing only the best characteristics.

		Per 100	Per 1000
2-yr. Seedlings.....(2-0)	2-4"	\$4.00	\$20.00
3-yr. Seedlings.....(3-0)	3-6"	6.00	30.00
3-yr. Seedlings.....(3-0)	4-8"	9.00	45.00
3-yr. Seedlings.....(3-0)	6-10"	12.00	60.00

Very superior stock.

4-yr. Transplants.....(3-1)	4-8"	18.00	90.00
4-yr. Transplants.....(2-2)	6-10"	25.00	125.00
5-yr. Transplants.....(3-2)	8-12"	35.00	175.00
*6-yr. Twice Transplants.....	10-12"	1.00 EACH	
*7-yr. Twice Transplants.....	12-15"	1.50 EACH	
*8-yr. Twice Transplants.....	16-20"	2.00 EACH	

*Sold in lots of 5 or more. Individually packed in ball of peat moss. Twice pruned and sheared to develop a full, bushy plant.

ENGELMANN BLUE SPRUCE

3-yr. Seedlings.....(3-0)	5-10"	7.00	35.00
---------------------------	-------	------	-------

CONCOLOR FIR
Excellent Ornamental. Silver trunk and soft silver foliage. One of the best Christmas trees. Holds needles best of any short-needle tree.

2-yr. Seedlings.....(2-0)	3-6"	9.00	45.00
3-yr. Seedlings.....(3-0)	4-9"	13.00	65.00
4-yr. Transplants.....(2-2)	5-10"	30.00	xxxx
*7-yr. Twice Transplants.....	10-15"	1.50 EACH	
*7-yr. Twice Transplants.....	12-18"	2.50 EACH	

*Sold in lots of 5 or more. Individually packed with ball of peat moss. Twice sheared to produce a full, bushy plant.

BALSAM FIR
Extensively used for Christmas trees and Ornamentals.

2-yr. Seedlings.....(2-0)	2-4"	6.00	30.00
3-yr. Seedlings.....(3-0)	3-6"	8.00	40.00

Wholesale List—Next 3 Pages ➔

Musser Forests, Inc. — 15

MUSSER QUALITY enables us to sell **40** MILLION TREES A YEAR

Musser's Spring 1958 Wholesale Planting List (cont.)

Evergreen Seedlings - Transplants

DOUGLAS FIR

Hardy Rocky Mountain type. Superior Ornamental and Christmas tree.

		Per 100	Per 1000
2-yr. Seedlings.....(2-0)	4-8"	\$5.00	\$25.00
2-yr. Seedlings.....(2-0)	5-10"	7.00	35.00
3-yr. Seedlings.....(3-0)	8-12"	11.00	55.00
4-yr. Transplants.....(2-2)(3-1)	5-10"	15.00	xxxx
5-yr. Transplants.....(3-2)	8-12"	20.00	100.00

CANADIAN HEMLOCK

Lacy, graceful growing habit. Can be sheared to any size. Hedges, specimen Ornamentals. Full shade or full sunlight.

3-yr. Seedlings.....(3-0)	4-8"	16.00	80.00
3-yr. Seedlings.....(3-0)	8-12"	24.00	120.00

4- and 5-yr. Transplants..			
(2-2, 3-2)	8-14"	45.00	xxxx

*5-yr. Twice Transplants.....12-15" 1.25 EACH

*Sold in lots of 5 or more. Individually packed with ball of peat moss. Field grown. Small Ornamental size for hedge, background or specimen plants.

JAPANESE LARCH

Japanese Larch is not evergreen, but is included here because the fine, light green needles relate them to evergreens in appearance.

2-yr. Seedlings.....(2-0)	5-10"	9.00	45.00
---------------------------	-------	------	-------

AMERICAN ARBORVITAE

Popular for Hedges and Ornamentals.

3-yr. Seedlings.....(3-0)	3-6"	5.00	25.00
3-yr. Seedlings.....(3-0)	6-8"	8.00	40.00

ORIENTAL ARBORVITAE—Thuja Orientalis

A popular evergreen Ornamental that grows in a pyramidal form—very graceful and symmetrical. Finer foliage than the other Arborvitaes. Color light green.

2-yr. Seedlings.....(2-0)	6-14"	8.00	40.00
---------------------------	-------	------	-------

GLOBE ARBORVITAE—Transplants

Plants started from rooted cuttings assure true strains.

Woodwardi—Dark Green

2-yr. Transplants—extra heavy...	5-8"	90.00	xxxx
----------------------------------	------	-------	------

*Ornamental, . . . 10-12" spread, 12-14" height, 2.25 EACH

*Field grown—twice transplanted and twice sheared. Excellent, bushy plants. Sold in lots of 5 or more. Individually packed with ball of peat moss.

Hovey's—Green

1-yr. Transplants.....	4-6"	30.00	250.00
------------------------	------	-------	--------

*Ornamental, 12-16" spread, 12-16" height, 2.25 EACH

*Field grown—twice transplanted and twice sheared. Excellent, bushy plants. Sold in lots of 5 or more. Individually packed with ball of peat moss.

PYRAMIDAL ARBORVITAE—Transplants

All plants started from rooted cuttings to assure true strains.

Compacta—Green

		Per 100	Per 1000
1-yr. Transplants.....	5-7"	\$30.00	xxxx
2-yr. Transplants—extra heavy			
field grown.....	10-15"	90.00	xxxx

JUNIPER—Blue Pfitzer—Hetzi Glauca

This improved Juniper with its irregular spreading habit, fast growth, and bluish color can be used extensively in landscape work. Preferred by many for foundation plantings.

1-yr. Transplants.....	5-7"	25.00	xxxx
2-yr. Transplants.....	6-10"	65.00	xxxx
Field grown.			
2-yr. Transplants.....	10-15"	90.00	xxxx
Heavy, field grown.			

*Three Times Trans Spread. 15-18" 2.25 EACH

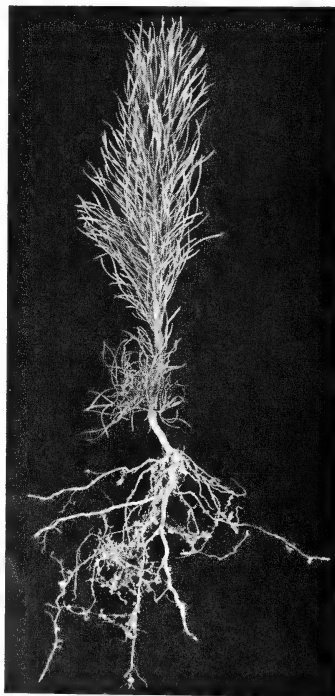
*Field grown—Ornamental size. Extra nice plants. Sold in lots of 5 or more. Individually packed with ball of peat moss.

JUNIPER—Irish

1-yr. Transplants.....	4-6"	25.00	\$200.00
------------------------	------	-------	----------

JUNIPER—Andorra

1-yr. Transplants.....	4-6"	25.00	xxxx
------------------------	------	-------	------



THIS

to

THIS

in only

SIX

to

SEVEN
YEARS

Christmas Trees, Ornamentals, Timber

JAPANESE YEW—Grown from seed

Taxus Cuspidata Capitata — Upright, Pyramidal
 Extra nice plants; excellent, fibrous roots.

		Per 100	Per 1000
2-yr. Seedlings.....(2-0)	3-6"	\$20.00	\$150.00
4-yr. Transplants.....(2-2)	6-10"	40.00	xxxx

JAPANESE YEW—Transplanted Rooted Cuttings

Taxus Cuspidata Capitata — Upright
 From tip cuttings

1-yr. Transplants.....	6-8"	25.00	xxxx
------------------------	------	-------	------

Taxus Hicksi — Upright

1-yr. Transplants.....	5-6"	25.00	175.00
2-yr. Transplants.....	8-12"	40.00	300.00

Taxus Moons Columnaris — Upright
 One of the very best upright types.

1-yr. Transplants.....	4-6"	25.00	xxxx
------------------------	------	-------	------

Taxus Browni — Upright

1-yr. Transplants.....	4-6"	25.00	175.00
2-yr. Transplants.....	6-8"	40.00	350.00
*5-yr. Twice Transplants.....	12-15"	2.50	EACH

*Sold in lots of 5 or more. Individually packed with ball of peat moss.



Taxus Cuspidata — Spreading

		Per 100	Per 1000
1-yr. Transplants.....	5-6"	\$20.00	\$150.00
2-yr. Transplants.....	6-8"	30.00	250.00
2-yr. Transplants.....	8-12"	40.00	350.00
*5-yr. Twice Trans.... Spread	12-15"	2.50	EACH

*Field grown. Sold in lots of 5 or more. Individually packed with ball of peat moss.

Taxus Intermedia — Spreading

1-yr. Transplants.....	4-6"	25.00	175.00
2-yr. Transplants.....	6-8"	40.00	350.00
*5-yr. Twice Transplants.....	10-12"	2.50	EACH

*Field grown. Sold in lots of 5 or more. Individually packed with ball of peat moss.

Taxus Hatfield No. 24 — Spreading

1-yr. Transplants.....	4-6"	25.00	xxxx
------------------------	------	-------	------

Taxus Cuspidata Capitata — Spreading

From side cuttings.

2-yr. Transplants.....	6-8"	30.00	250.00
------------------------	------	-------	--------

JAPANESE HOLLY

Excellent evergreen shrub and hedge.

Ilex Convexa — transplanted rooted cuttings

1-yr. Transplants.....	4-6"	20.00	175.00
------------------------	------	-------	--------

Ilex Rotundifolia — transplanted rooted cuttings

1-yr. Transplants.....	5-6"	20.00	175.00
2-yr. Transplants.....	6-8"	30.00	250.00
*4-yr. Twice Transplants.....	12-15"	1.75	EACH

*Field grown. Sold in lots of 5 or more. Individually packed with ball of peat moss.

Ilex Crenata Hetzi

Very shiny, convex shaped leaf. Larger leaf than Convexa.

1-yr. Transplants.....	4-6"	20.00	175.00
*4-yr. Twice Transplants... Spread	12"	1.75	EACH

*Field grown. Sold in lots of 5 or more. Individually packed with ball of peat moss.

AMERICAN HOLLY — Rooted Cuttings

Ilex Opaca

Evergreen red berry tree-type Holly.

1-yr. Transplants.....	50.00	xxxx
------------------------	-------	------

Sexes separate. If planted in quantity, suggest ratio of about ten female to one male plant.

BARBERRY — Red

Unusually good red color. Excellent hedge plants. Red leaves in summer, red berries in fall-winter.

2-yr. Seedlings.....(2-0)	6-12"	12.00	xxxx
---------------------------	-------	-------	------

DROOPING LEUCOTHOE — Catesbaei

An evergreen shrub with glossy green foliage turning to rich fall colors. Flowers are drooping white bells appearing in May.

*Twice Transplants—Field grown 10-15"	2.00	EACH
---------------------------------------	------	------

*Sold with a lot of 5 or more. Packed with ball of peat moss.

Wholesale List, continued

Musser Stock Grows Best!

WHITE DOGWOOD — *Cornus Florida*
 One of the most beautiful of small trees. Handsome in early spring with its white-petaled flowers and again in fall with bright red fruit and gorgeous leaf coloring.

		Per 100	Per 1000
Seedlings.....	4-8"	\$9.00	xxxx

PINK DOGWOOD — Grafted Trees
 See Pages 6 and 7 for complete description.

Grafts.....	12-18"	150.00	xxxx
Grafts.....	18-24"	200.00	xxxx
Sold in lots of 5 at the 100 rate.			
Grafts.....	2-3'	3.95 EACH	

CHINESE CHESTNUT — Blight resistant
Ching Chow strain
 Will bear large, sweet delicious nuts. Very fast growing. Valuable as Ornamental and for Shade, as well as for Fruit. Grows 30 to 40 feet tall. May be ordered in lots of 10 at the 100 rate.

Seedlings.....	10-18"	30.00	\$150.00
Seedlings.....	18-30"	40.00	200.00

PIN OAK — *Quercus Palustris*
 Forms a symmetrical, pyramidal head with long pendulous branches. The foliage is deeply cut and assumes a brilliant red autumn color. Because of rapid growth, it is much used for avenues and lawn specimens. May be ordered in lots of 10 at the 100 rate.

Seedlings.....	6-12"	12.00	80.00
Seedlings.....	12-18"	30.00	xxxx

RED OAK — *Quercus Rubra*
 Northern, hardy, rapid-growing timber and shade tree. Dark red fall foliage.

Seedlings.....	6-18"	12.00	60.00
----------------	-------	-------	-------

WHITE OAK — *Quercus Alba*

Seedlings.....	6-10"	12.00	60.00
----------------	-------	-------	-------

NORWAY MAPLE — *Acer Platanoides*
 A large handsome tree with broad, rounded head. The leaves are rich green and remain until late fall. Extensively used for street and shade-tree plantings.

Seedlings.....	4-8"	12.00	xxxx
Seedlings.....	12-18"	20.00	xxxx

WHITE BIRCH — *Betula*

		Per 100	Per 1000
Seedlings.....	6-12"	\$8.00	\$40.00
Seedlings.....	12-24"	12.00	60.00

HONEY LOCUST (Thornless)
 Seedlings..... 6-12" 6.00 30.00
 See Page 13 for description

AMERICAN ELM
 Seedlings..... 10-20" 6.00 30.00
 See Page 13 for description

WHITE ASH
 Seedlings..... 6-10" 5.00 25.00
 See Page 13 for description

SUGAR MAPLE (Hard Maple)
 Seedlings..... 6-12" 10.00 50.00
 See Page 13 for description

LITTLE-LEAF LINDEN
 Seedlings..... 6-10" 10.00 xxxx
 See Page 13 for description

ROSA MULTIFLORA — Living Fence
 See Page 24 for complete description.

Graded 3mm. and up.....	10-18"	10.00	50.00
-------------------------	--------	-------	-------

Ground Covers

ENGLISH IVY — Evergreen Ivy
 Rooted Cuttings..... 5-9" 15.00 xxxx

PACHYSANDRA TERMINALIS — Spurge
 1-yr. Plants..... 2-4" 9.00 80.00
 2-yr. Heavy Transplants..... 3-5" 25.00 xxxx

MYRTLE — *Vinca Minor*, Periwinkle
 Medium lining-out Grade..... 8.00 35.00
 Heavy lining-out Grade..... 11.00 55.00



Largest Nursery of Its Kind in America



SCOTCH PINE



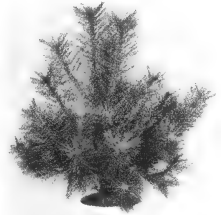
From Musser Nursery No. 2, part of which is shown above, over 28,000,000 seedlings were shipped in 1957.



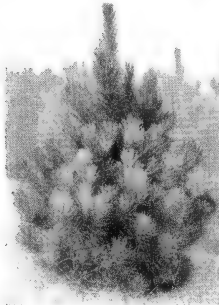
SCOTCH PINE



AUSTRIAN PINE



AUSTRIAN PINE



RED PINE

LANDSCAPING ORNAMENTALS

FRASER FIR—Hardy

Often called Southern Balsam Fir. Shiny green foliage is lighter on under side. Has delightful fragrance and attractive purplish cones. Hardy. Good Ornamental or Christmas Tree. Sheared and pruned twice to develop a nice bushy tree.

- *10-12 in. each \$1.50
- *15-20 in. each 2.50

*Sold with a lot of 5 or more. Packed with ball of peat moss.

CONCOLOR FIR (White Fir)

Similar in appearance to Fraser Fir. The blue-green or blue-white needles make an excellent color contrast when planted with other evergreens. One of the best firs for northern gardens. Hardy, fast growing. Sheared and pruned twice to develop a full, bushy tree. Requires good drainage.

- *10 15 in. each \$1.50
- *12-18 in. each 2.50

*Sold with a lot of 5 or more. Packed with ball of peat moss.

CANADIAN HEMLOCK

Lacy, graceful growing habit. One of the best plants for hedges, since it can be sheared to any size—can be kept low for years, or permitted to grow into a high hedge or windbreak. Can be planted in sun or shade.

- *12-15 in. each \$1.25

*Sold with a lot of 5 or more. Packed with ball of peat moss.



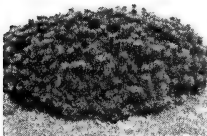
FRASER FIR



WHITE PINE



WHITE SPRUCE



MUGHO PINE, SHEARED



Beautiful specimen Canadian Hemlock



HEMLOCK

LANDSCAPING

JUNIPERS

Fast-growing, hardy evergreens, extensively used in all types of landscape work.

Sabina (Medium Spreader, Vase Shape)

*12-16 in. (spread).....each \$2.50

Pfitzer (Green, Medium Spreader)

*15-18 in. (spread).....each \$2.50

Blue Pfitzer (Hetzi Glauca)

(Blue, Spreading)

*15-18 in. each \$2.50

Irish (Narrow Upright)

*18-24 in. each \$1.75

*24-30 in. each 2.50

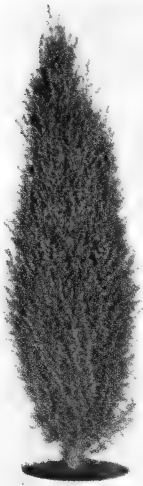
Fastigiata (Compact Upright)

Very much like Irish.

*18-24 in. each \$1.75

*24-30 in. each 2.50

*Sold with a lot of 5 or more.
Packed with ball of peat moss.



IRISH JUNIPER



SABINA JUNIPER

NORWAY SPRUCE

JAPANESE YEW

Deep rich green foliage. Sun or shade. Successful where many ornamentals will not grow. Beautiful, natural cone shape. This Yew can easily be sheared for hedges. **Considered the leading ornamental evergreen by landscape specialists.**

Upright (Bushy, heavy)

*12-15 in. each \$2.50

Spreader

*12-15 in. (spread).....each 2.50

*Sold with a lot of 5 or more.
Packed with ball of peat moss.

JAPANESE HOLLY (Ilex)

(Evergreen Shrub Type)

True strains from rooted cuttings. Unusually good ornamental form, twice as broad as high. Nicely branched for specimen plants—withstands shearing well when used as hedge. Excellent evergreen hedge or individual specimen plant.

Ilex crenata Hetzi. Very shiny, convex-shaped leaf.

*12-15 in. (spread).....each \$2.00

*Sold in lots of 5 or more.
Packed with ball of peat moss.

JAPANESE HOLLY (Ilex)

(Evergreen Shrub Type)

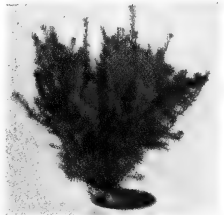
Ilex Rotundifolia.

(Round-Leaf Holly)

True strains from rooted cuttings. Unusually good ornamental form, twice as broad as high. Nicely branched for specimen plants—withstands shearing well when used as hedge. Excellent evergreen hedge or individual specimen plant.

*12-15 in. (spread).....each \$2.00

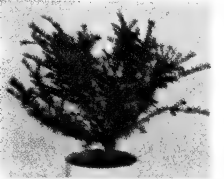
*Sold with a lot of 5 or more.
Packed with ball of peat moss.



SEMI-SPREADING YEW



UPRIGHT YEW



SPREADING YEW



JAPANESE HOLLY



NORWAY SPRUCE

NORWAY SPRUCE

Very hardy. Most rapid-growing and popular Spruce. Should be sheared when making rapid growth to insure bushy trees. Needles about 1 inch long. Specimen individual trees or evergreen hedge. Small ornamental sizes.

*12-18 in. Each \$1.00

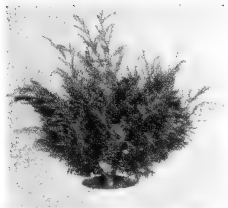
*18-24 in. Each 1.50

*24-30 in. Each 2.50

*Sold with a lot of 5 or more. Packed with ball of peat moss.



ORNAMENTALS



PFITZER JUNIPER

GLOBE ARBORVITAE

Very compact. Dwarf, round, globe shaped ornamental for under windows and where low growth is desirable.

- Hovey's—Green**
 *12-16 in. height
 12-16 in. spread..... each \$2.25
- Woodwardi—Dark Green**
 *12-14 in. height
 10 12 in. spread..... each \$2.25

*Sold with a lot of 5 or more. Packed with ball of peat moss.

- Woodwardi—Dark Green**
 *Ornamental, 12-14 in. height
 10-12 in. spread..... each \$2.25

*Field grown—twice transplanted and twice sheared. Excellent, bushy plants. Sold in lots of 5 or more. Individually packed with ball of peat moss.

- Hovey's Green**
 *Ornamental, 12-16 in. height
 12-16 in. spread..... each \$2.25

*Field grown—twice transplanted and twice sheared. Excellent, bushy plants. Sold in lots of 5 or more. Individually packed with ball of peat moss.



BALSAM FIR



RHODODENDRON



RED BARBERRY



DOUGLAS FIR

AZALEA

For brilliant color, Azaleas have always been one of the most popular shrubs. Wonderful effects can be achieved when combined with various evergreen arrangements.

Azalea Mollis
 Hardy. Sheds leaves in winter. Your choice of Orange (Babeuff) or Yellow (Hugo Hardyzer)

- 4-yr. 8-12 in. each \$1.00
 *5-yr. 12-15 in. each 2.25
 *Budded ready to bloom.

Exbury
 Mixed colors. Grown from seed.
 3-yr. 9-12 in. each \$1.50

Evergreen Azalea
 Well branched. Excellent, heavy 2-yr. transplanted small ornamental size.

Azalea Boudoir. Watermelon Pink
 *2-yr., heavy, 9-12 in. each \$1.50

Azalea Fedora. Dark Pink.
 *2-yr., heavy, 9-12 in. each \$1.50

Azalea Herbert. Double Orchid.
 *2-yr., heavy, 6-9 in. each \$1.50

Individually wrapped in ball of peat and plastic.

*If ordered in quantities of 100 or more..... each \$1.00

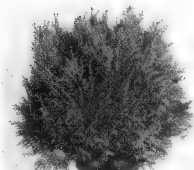
DROOPING LEUCOTHOE

(Catesbaei)

An evergreen shrub with glossy green foliage turning to rich fall colors. Flowers are drooping white bells appearing in May.

- *10-15 in. each \$2.00

*Sold with a lot of 5 or more. Packed with ball of peat moss.



GLOBE ARBORVITAE



JAPONICA



DROOPING LEUCOTHOE

COLORADO BLUE SPRUCE

Excellent stock—finest in the country. One of the finest for ornamental and Christmas tree use. Sturdy and compact in form; straight stems. Range in color from slightly blue-green to marvelous blue. The seed has been collected at very high cost from trees showing only the best characteristics. Rather slow growing. If moist, will grow well on sandier or heavier soils than most Spruce.

- *10-12 in. Each \$1.00
 *12-15 in. Each 1.50
 *16-20 in. Each 2.50

*Sold with a lot of 5 or more. Packed with ball of peat moss.



COLORADO BLUE SPRUCE





AZALEA MOLLIS



RHODODENDRON



ACTUAL HOLLY PLANT
as offered on this Special No. 10

SPECIAL No. 10

HOLLY

Special

This offer includes 6 plants
of two different varieties:

4 Hardy American Holly
—pyramidal tree type

These have glossy green
leaves and brilliant red ber-
ries. Included are three fe-
male plants producing red
berries, and one male plant
for pollen.

2 Japanese Holly—
evergreen shrub type

The above plants are all
4 to 6 inches high, with
a mass of roots developed
in 2¼-in. pots.

Individually wrapped in
peat moss and plastic—
special shipping box for safe
arrival.

All 6 for \$5.95

Shipped postpaid at proper
planting time.



MATURE AMERICAN HOLLY TREE

BETTER READING

AT A

NEW LOW

PRICE!

20 WEEKS OF
THE SATURDAY EVENING
POST

FOR ONLY **\$2.00**

Just 10¢
a copy!



Yes, now you can enjoy 20 weeks of exciting POST reading for just \$2.00. Think of it—you pay as little as 10c for each issue! And look what's coming!

... "News behind the news" features on sports, government, medicine, nature, science, travel, etc.—plus life stories of famous public figures.

... Novels, mysteries and short stories by top authors such as William Saroyan, Conrad Richter, Paul Gallico, William Faulkner and Erle Stanley Gardner.

... Humor, cartoons, quizzes and special features.

To order your POST at this bargain price, just fill out and mail the order form on the back of this slip—TODAY!

Recommended by **MUSSER FORESTS, INC.**

START MY
POST
RIGHT AWAY
AT THIS
**SPECIAL
PRICE!**



20
WEEKLY
ISSUES
FOR ONLY
\$2.00

Name

Street or R.D.

Town: Zone State

Payment
enclosed

Bill me

Mail this slip to:

THE SATURDAY EVENING POST

Dept. 5449, Independence Square
Philadelphia 5, Pennsylvania

UNCONDITIONAL GUARANTY: The publisher agrees, upon request direct from subscribers to its Philadelphia office, to refund the full amount paid for any copies of Curtis publications not previously mailed.

RHODODENDRON and AZALEA

Our own hardy, Pennsylvania-grown, Rhododendron and Azalea quickly grow into fine, bushy specimens of great value. Highly decorative shrubs of great and increasing popularity.

All items on this page shipped Parcel Post or Express Charges COLLECT, except Specials No. 9 and 10.

OUR OWN NURSERY GROWN

ILLUSTRATED IN COLOR ON FACING PAGE

Catawbiense Grandiflorum

2-yr. transplants, 9-12". 2-4 branches, ready to bloom in 1 to 2 years. Carefully wrapped to insure safe delivery. Color: ORCHID. Individually root wrapped.

6 9 to 12" plants **\$12.00**
ALL 6 FOR ONLY
3 FOR \$6.75

Hybrid Rhododendron

Twice transplants, 9-12" and 12-15". Ready to bloom in 1 to 2 years. Each plant labeled for true color, all nicely branched. Carefully wrapped to insure safe delivery. Individually root wrapped.

Your choice:

RED	9-12"	ALL 3 FOR ONLY
PINK	12-15"	
MAUVE	12-15"	
		\$9.50
		\$3.95 EACH

Azalea Mollis

Hardy variety. Azalea requires sun and acid soil. It grows to an ultimate height of 4 to 6 feet. Carefully wrapped to insure safe delivery. Individually root wrapped.

8-12" transplants, branched and mostly budded to bloom this spring. Colors: ORANGE and YELLOW.

3 8-12" plants **\$5.25**
ALL 3 FOR ONLY
\$2.00 EACH

Hardy Evergreen Azalea

Mixed Colors (no color choice). Pink, Lavender and Red. Sometimes called Torch Azalea. Very good for northern gardens.

4-yr. 12-15" bushy, budded plants ready to bloom this year. Individually root wrapped.

3 12-15" plants **\$6.00**
ALL 3 FOR ONLY
\$2.50 EACH

Hardy Evergreen Azaleas NAMED VARIETIES

2-yr. transplanted. Excellent, heavy, well-branched—small ornamental size. Individually root wrapped.

FEDORA. Dark Pink..... 9-12"
BOUDOIR. Pink..... 9-12"
HERBERT. Double Orchid..... 6-9"

Any 3 for only
\$4.00
Each—\$1.50
Lots of 25 or more
\$1.00 each



True Qualities Through Grafting



Best of Care Starts Musser Ornamentals

Special No. 9

6 Rhododendron — 6 Azalea

Brilliant Colors

Strong 2-yr. transplants, 4 to 8 inches tall. Mass of roots, large leaves. Hardy, the Azalea Mixed colors: Orange, Red and Yellow. Rhododendron are hybrid seedlings grown from Red flowering stock. This offer is an outstanding value.

6 Rhododendron
6 Azalea

All 12

Shipped Postpaid
in special carton

\$5.95

→
Your Rhododendron
and Azalea will be
shipped in this
strong container, in-
suring arrival in per-
fect condition.





Musser FLORIBUNDA ROSES

HARDY NORTHERN-GROWN PLANTS. All Prices Postpaid

Floribundas are top-notch for borders and general mass planting. They grow taller and much bushier than Hybrid Teas, and the plants are simply covered with masses of bloom in one wave after another all summer long. They are most effective in beds or borders of one variety. Blooms are carried in clusters; some varieties are semi-double, some very double, and others are like perfect miniature Hybrid Teas. Floribundas are very easy to care for and will repay you many times over for the space they occupy.

FASHION. The flowers are shaped like Hybrid Teas, of luminous coral suffused with gold. Fragrant and ever beautiful. Sparkling color, fine in a group planting. About 2 feet tall. Plant Pat. 739.

GOLDLOCKS. A charming Floribunda with masses of rich golden yellow bloom. Each flower is shaped like a small Hybrid Tea, about 3 inches across when fully open. A spreading, bushy plant with dark foliage. Very popular. Plant Pat. 672.

MA PERKINS. Graceful, cup-shaped blooms, lighter than Fashion but blending perfectly with it. Soft shell-pink when fully open. Free blooming, healthy and bushy. Fine for cutting and the garden. Plant Pat. 1143.

RED PINOCCHIO. Large, unfading clusters of rich carmine. The flowers are of interesting cupped form, about 3 inches across. Delightful perfume, like wild Roses. Bushy and very free flowering. Plant Pat. 312.

VOGUE. Rich cherry-coral in color, these buds are of pointed form and are carried in medium and large clusters all season long. The 2½ to 3-foot bush is compact in growth, ideal for foundation planting. Plant Pat. 926.

WHITE BOUQUET. A lovely white Floribunda with sparkling 4 to 5-inch flowers against lustrous dark green foliage. Flowers are of gardenia form, with spicy fragrance. Blooms freely and is easy to care for. Plant Pat. 1415.

\$2.50 each

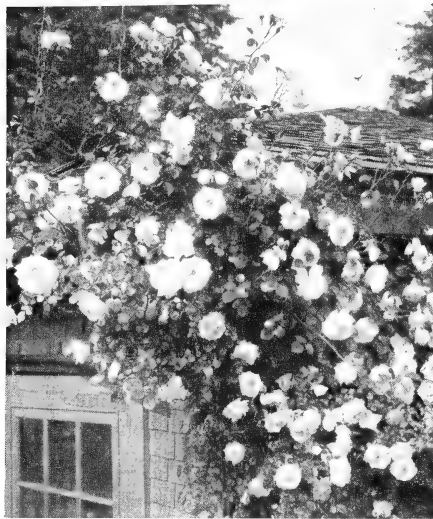
ANY 3

for
\$6.75

ANY 6

for
\$12.95

SUPER-WRAPPED



Heavy Flowering CLIMBERS

Climbers are excellent for mass decoration and splendid for backgrounds in the garden. They give the largest quantity of blooms for your money and have many uses. They can be trained against a fence, on a pillar or against a garage, and may be left to trail on a sloping bank. They need the least protection and attention of any group of Roses.

CLIMBING CRIMSON GLORY. The climbing form of the always-popular bush Rose, with the same rich crimson flowers on long stems. Old-time Rose fragrance. Makes a beautiful picture wherever grown, and the blooms are always prized for cutting. Blooms repeatedly all summer until frost. Plant Pat. 736.

CLIMBING GOLDLOCKS. The same rich golden yellow buds that are displayed by the Floribunda, and the same ability to bloom all summer. Fresh new buds keep replenishing the mass effect of rich yellow. Very vigorous and hardy. Plant Pat. 1090.

CLIMBING SUMMER SNOW. Large clusters of snow-white bloom from July through October. Loosely double flowers, 2 inches across, of glistening texture, with golden stamens. Easy to grow. A vigorous climber or pillar reaching a height of 8 to 10 feet. Plant Pat. 400.

GLADIATOR. Huge, high-centered flowers, unusually large for a climber, brilliant rose-red in color. A sturdy plant growing 8 to 10 feet tall and withstanding winter well. A fine addition to the climbers, with rich dark green foliage as a background for the colorful flowers. Blooms and re-blooms all season. A climber that you should grow! Plant Pat. 1524.

\$2.75 each

ANY 3

for
\$7.50

SUPER-WRAPPED

See also pages 8 and 9 for PATENTED ROSES and HYBRID TEA ROSES



ROSE HEDGE ROSA MULTIFLORA THORNY TYPE

A Living Fence — A Winter Paradise for Wild Bird Life

ROSA MULTIFLORA is a tall growing, very thorny shrub, like the wild rose. Very hardy even in poor soil. Grows 2 to 3 feet in a single season to an ultimate height of 6 to 8 feet. Ideal for use as living fence for farm use—keeps in cattle, horses, SHEEP and GOATS. Makes fast growing ground cover. Pinkish white blossoms literally cover plant in June. These are followed by profusion of large red berries which attract game birds such as grouse, pheasant, and partridge, as well as smaller birds. During winter its arching branches provide protection from snow and cold as well as food for birds.

ROSA MULTIFLORA JAPONICA, thorny type, BEST QUALITY, EXTRA HEAVY, 3 millimeter (tops sheared, anything under 3 millimeter graded out).

10 to 18 inch — Shipping charges collect Per 100 Per 1000
\$10.00 \$50.00

MUSSER FORESTS, Inc. INDIANA, PA.

NOTICE: We will make every effort to fill your order exactly as you want it, but if we are sold out of a variety you ordered, may we substitute a similar variety, of equal or greater value?

Please Type or
Write Plainly!

Write Yes or No. _____

Your Name.....SHIP BY — Express Parcel Post

R.F.D. or Street No.....Ship to.....

City and State.....

Shipping Date.....

It may be necessary to ship Roses, Berries, Fruit, Flowering and Shade Trees at a time different than other listed stock. You may receive several shipments before your order is completed. This notice is to save you unnecessary correspondence.

Quantity	Age	Size-ins.	KIND OF TREE	Unit Price	Amount

TOTAL AMOUNT OF ABOVE ORDER

Exemption No. _____ or Add 3% Sales Tax for Pennsylvania destinations on Ornamentals only

Add 50c packing charges on orders totaling less than 1000 trees

TOTAL ORDER AND TAX

AMOUNT TO BE ENCLOSED WITH THIS ORDER

C.O.D. BALANCE (IF ANY)

No Orders can be accepted for less than specified quantities.

No. of Orders	Special Nos.	MUSSER SPECIALS — NO C.O.D.'S	Price	Total
	1	25 Evergreen Trees, 3 and 5-year Trees (Postpaid).....	\$5.00	
	2	5 Blue Spruce, 8-12 in. Transplants (Postpaid).....	3.95	
	4	20 White Birch Seedlings, 12-24 in. (Postpaid).....	3.50	
	5	Foundation Planting, 6 Pfützer Juniper, 4 Jap. Yew, 10-16 in. (Postpaid)	12.95	
	6	50 Living Fence (Rosa Multiflora), 10-18 in. (Postpaid).....	6.00	
	7	25 Evergreen Hedge, 8-10 in., 4-yr. Trans. (Am. Arborvitae), (Postpaid)	5.50	
	9	6 Rhododendron, 6 Azalea, 4-8 in., 2 yr. Transplants (Postpaid).....	5.95	
	10	6 Holly (4 Tree Type; 2 Shrub Type), 4-6 in. (Postpaid).....	5.95	
	11	100 Red Barberry Hedge, 2-yr, 6-12 in. (Postpaid).....	8.95	
	12A	12 Junior Ornamentals, 8-12 in. 2-yr. Heavy Transplants (Postpaid)....	7.95	
	16	5 Hybrid Rhododendron, 5-8 in. (Postpaid).....	5.50	
	17	3 Rhododendron, 3 Azalea, 9-12 in., 4-yr. Transplants (Postpaid).....	6.95	
	24	100 Evergreen Hedge, 6-8 in. (Am. Arborvitae Seedlings) (Postpaid)....	8.95	
	25	20 Flowering, Shade, Nut Trees, 10-18 in. (Postpaid).....	6.50	
	26	25 Blue Spruce, 3-yr., 6-10 in. (Postpaid).....	3.75	
	27	50 Canadian Hemlock, 3-yr., 8-12 in. (Postpaid).....	12.95	

TOTAL TO BE ENCLOSED FOR SPECIAL OFFERS

Add 3% Sales Tax for Pennsylvania destinations

Amount of Check or Money Order to Cover Entire Order

YOUR FRIENDS who are interested in securing reliable nursery stock will appreciate receiving our catalog and Price List. **THANK YOU.**

Name..... Name.....

St. and No..... St. and No.....

City and State..... City and State.....

RECOMMENDED SPECIES AND SIZES FOR Christmas Tree Planting



SCOTCH PINE



AUSTRIAN PINE



WHITE PINE



NORWAY-
WHITE SPRUCE

SPECIAL STRAIN SCOTCH PINE

In greatest demand in many areas. One of the most rapid-growing species. Brings top price, especially when sheared. Musser Special Strain Scotch Pine retains its blue-green or silvery green color in cold weather. Needles are 1½ to 2½ inches long, curved.

		Per	Per
		100	1000
2-yr. Seedlings	(2-0) 3- 6 in.	\$5.00	\$25.00
2-yr. Seedlings	(2-0) 4- 8 in.	7.00	35.00
2-yr. Seedlings	(2-0) 5-10 in.	9.00	45.00
4-yr. Transplants	(2-2) 5-10 in.	20.00	100.00

AUSTRIAN PINE

Will do well where fumes bother other species. Very dark green needles, 3½ to 7 inches long. Bushy trees, strong branches. Will grow where most of top soil is gone. Increasingly in demand.

2-yr. Seedlings	(2-0) 3- 6 in.	5.00	25.00
3-yr. Seedlings	(3-0) 5-10 in.	8.00	40.00
3-yr. Seedlings	(3-0) 8-14 in.	10.00	50.00

WHITE PINE

Very adaptable as to soil, and will do better on heavy, wet soils than the other Pines. Very soft, silver-green needles 2½ to 5 inches long. Needs shearing to be really compact. Favored in many areas.

3-yr. Seedlings	(3-0) 4- 8 in.	7.00	35.00
3-yr. Seedlings	(3-0) 6-12 in.	11.00	55.00

AMERICAN RED PINE

A rapid-growing, bushy tree, very popular. Dark green, soft needles, 4 to 5 inches long. Many buyers like it as well as Scotch Pine.

3-yr. Seedlings	(3-0) 4- 8 in.	7.00	35.00
3-yr. Seedlings	(3-0) 6-12 in.	9.00	45.00
4-yr. Transplants	(2-2) 8-12 in.	20.00	100.00

MUSSER EXCLUSIVE NORWAY SPRUCE (Fast Growing)

Most rapid-growing and popular Spruce. This short-needled tree should be sheared when making most rapid growth to insure bushy trees. Cut as late as possible.

2-yr. Seedlings	(2-0) 5-10 in.	7.00	35.00
3-yr. Seedlings	(3-0) 8-12 in.	10.00	50.00
3-yr. Transplants	(3-1) 8-12 in.	16.00	80.00

WHITE SPRUCE

Similar to Norway Spruce but with more definite fragrance. Good in highland areas. Fine color and form.

2-yr. Seedlings	(2-0) 4- 8 in.	5.00	25.00
3-yr. Seedlings	(3-0) 5-10 in.	7.00	35.00
3-yr. Seedlings	(3-0) 8-12 in.	9.00	45.00
4-yr. Transplants	(3-1) 8-12 in.	18.00	90.00

COLORADO BLUE SPRUCE

Highly regarded for bluish color and bushy, symmetrical form. Needles hold somewhat better than Norway or White Spruce. If moist, will grow on sandier or heavier soils than most Spruce. Slow growing, but is a premium Christmas tree.

3-yr. Seedlings	(3-0) 4- 8 in.	9.00	45.00
3-yr. Seedlings	(3-0) 6-10 in.	12.00	60.00

DOUGLAS FIR

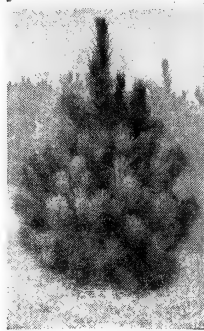
Compact, pyramidal form, with short, bluish green needles. Easily transplanted. Thrives in rather light soil. Our strain is selected for its hardiness. Fine for Christmas and ornamental tree.

2-yr. Seedlings	(2-0) 5-10 in.	7.00	35.00
3-yr. Seedlings	(3-0) 8-12 in.	11.00	55.00

COLOR FIR

Well-drained ground only.

3-yr. Seedlings	(3-0) 4- 9 in.	13.00	65.00
-----------------	----------------	-------	-------



AMERICAN RED PINE



COLORADO
BLUE SPRUCE



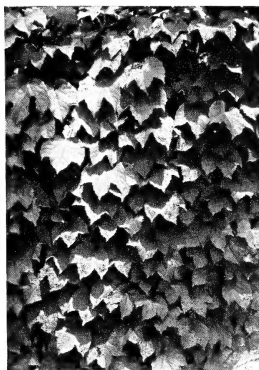
DOUGLAS FIR

SEE PAGES 14, 15
and 16 of catalog
for other sizes and
varieties

40 ~~20~~ **MILLION TREES A YEAR**

Growers Know . . . It Pays to Plant MUSSER TREES!

MUSSER QUALITY ENABLES US TO SELL



ENGLISH IVY — One of the very best EVERGREEN CLIMBING VINES and GROUND COVERS. Popular close clinging vine. Rich, dark green, glossy, three-lobed leaves make dense covering especially on brick or stone walls. Thrives in any good soil and under smoky city conditions. Is evergreen the year 'round. For walls, fences, etc. Especially desirable beneath shrubbery.



PACHYSANDRA — Excellent in masses under heavy shade of trees. A dense, lustrous evergreen, trailing vine type of ground cover. It thrives under evergreens or anywhere. If planted 3 to 12 inches apart it will give a pleasing effect immediately and in two years' time forms a solid ground cover. Prefers shade; any soil, water liberally. It is VERY HARDY. Grows 6 to 8 inches tall. Fine for terraces or any place where grass is not successful.

Many items of larger stock are available balled and burlapped, for pick-up at the Musser Nursery during the packing and shipping season.

• Plan to Visit Us •



WITHOUT . . . AND . . . WITH
It DOES make a DIFFERENCE

RA-PID-GRO

The Miracle Plant Food

Ra-Pid-Gro is a complete, concentrated plant food. It speeds up growth of plants now in place, and assures more successful transplanting of new plants.

1 pound	Ra-Pid-Gro	(makes 22 gals.)	\$1.30	postpaid
2 pounds	Ra-Pid-Gro	(makes 44 gals.)	2.50	postpaid
5 pounds	Ra-Pid-Gro	(makes 110 gals.)	4.75	postpaid
10 pounds	Ra-Pid-Gro	(makes 220 gals.)	9.00	postpaid
25 pounds	Ra-Pid-Gro	(makes 550 gals.)	21.00	postpaid

Use for —

- EVERGREENS • SHRUBS
- SHADE TREES • ROSES

Also for Lawns, Perennials, Vegetables, House Plants

HOW IT IS USED

Just add water at the rate of 1 lb. of Ra-Pid-Gro to 22 gallons of water. It is ready to use as soon as it dissolves. For a small number of plants, mix at the rate of 1 teaspoonful to a quart of water.

GROUND COVERS and VINES

Lots of 50 at the 100 rate—shipping charges collect

ENGLISH IVY

(Evergreen Vine and Ground Cover)

Per 100 Per 1000

Rooted Cuttings 5- 9 in. \$15.00 xxxx

Mass of roots—sheared to 3 to 5 runners. Plants shipped with earth and peat moss, individually wrapped. Photo and description at left.

PACHYSANDRA TERMINALIS (Spurge)

Very best evergreen ground cover; hardy, thrifty.

1-yr. Plants 2- 4 in. 9.00 \$80.00

2-yr. Heavy Transplants 3- 5 in. 25.00 xxxx

Mass of roots, 2-3 leaders to each plant. Individually wrapped. See photo and description at left.

HALL'S HONEYSUCKLE (Creeper or Climber)

Rapid growing vine with beautiful foliage. Good ground cover. Flowers are very, very fragrant and abundant. Used mostly for bank cover. OUR STOCK THIS YEAR IS THE BEST.

Medium, Lining Out Grade 7.00 35.00

2-yr. Heavy Transplants. No. 1 20.00 125.00

MYRTLE (Evergreen Ground Cover)

Vinea Minor, Periwinkle. One of the best ground covers, small shiny evergreen leaves, and violet-blue flowers in spring. Thrives in shade. Especially valuable for planting under trees or in other shaded spots where grass will not grow. Plant 1 foot apart.

Medium, Lining Out Grade 8.00 35.00

Heavy, Lining Out Grade 11.00 55.00

BITTERSWEET (Deciduous Climber or Ground Cover)

Celastrus Scandens. Showy clusters of orange-red berries for winter bouquets. Sun or shade in any soil. Attracts birds.

12-18 in. 14.00 65.00

VIRGINIA CREEPER (Vine and Ground Cover)

Ampelopsis Quinquefolia. A splendid ground cover, especially on sandy soils where no other vegetation will grow. Unsurpassed in beauty by any other vine in autumn when the leaves turn to the most vivid tones of crimson, scarlet and orange. Plant 3 feet apart.

2-yr. Plants 6-12 in. 20.00 95.00

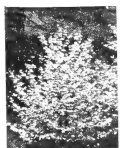
2-yr. Extra Heavy Plants 12-18 in. 40.00 200.00

Plant Climbing Vines and Ground Cover 1 to 1½ feet apart.

M U S S E R

Special No. 25

20 FLOWERING, SHADE and NUT TREES



White Dogwood



Pin Oak



Norway Maple



Chinese Chestnut

5 of each 10-18 in. **White Dogwood, Pin Oak, Norway Maple, Chinese Chestnut**, will soon provide year around beauty and comfort. Plant now where you want them to grow to complete the hardwood part of the landscape plan. This assortment will give you a riot of fall color—Yellow, red and purple.

20 POSTPAID at Planting Time for **\$6.50**

Special No. 6

LIVING FENCE

ROSA MULTIFLORA. Heavy 3MM. Stock

10 to 18 in. Dense, thorny fence. Prune to any height. Clusters of pinkish-white wild roses in June, bright red berries follow. Fast growing.

50 POSTPAID at Planting Time for **\$6.00**



Special No. 26

25 COLORADO BLUE SPRUCE

These select three-year, 6-10 in. plants will grow into outstanding trees for use as boundary markers, windbreaks, individual specimen trees. Densely pyramidal varying in color from bluish-green to shining blue. Prefers sun.



25 POSTPAID at Planting Time for **\$3.75**

Special No. 24

100 EVERGREEN HEDGE

American Arborvitae

These are sturdy 3-yr. seedlings, 6 to 8 inches high. This offer will give you enough trees to plant 100 feet of hedge. Can also be used in the foundation planting or as a specimen.



100 POSTPAID at Planting Time for **\$8.95**

Visit Our Nurseries

Thousands stop at our retail sales yard each year during the Spring and Fall planting season to personally select nursery stock. We are proud to show you how Musser Quality stock is grown.

Located 6 miles north of Indiana, Pa., on Route 119, such a visit is a highlight of any trip through our area.



SALES YARD AT MUSSER NURSERY NO. 3

Larger Stock

BALLED and BURLAPPED

Many larger items are carried at our Nursery Sales Yard, carefully packed with a ball of original soil, protected with burlap.

Too large to be practical for shipping, you may make your own selection and take it home in your car.

Wonderful for a finished Landscape—quickly!

SPECIALS

Special No. 17

3 RHODODENDRON—3 AZALEA

Large, heavy 4-year twice transplants, 9-12 inches. Hardy, healthy, branched plants. **AZALEA.** Mostly budded, ready to bloom next year. Mixed colors red, orange, and yellow. **RHODODENDRON.** Ready to bloom in 1 to 2 years. Grown from red flowering plants, large leaf. **Outstanding value.**

All 6 Postpaid at **\$6.95**
Planting Time for



Special No. 16

HYBRID RHODODENDRON

Excellent, sturdy plants transplanted hybrid cuttings 5-8 in. tall. Mixed colors—rose, light purple and orchid.

5 POSTPAID at **\$5.50**
Planting Time for

Special No. 11

Red Barberry Hedge

2-year heavy plants, 6 to 12 in. 100 feet of brilliant, colorful hedge. Very hardy. Shears well to make dense hedge. Plant 12 to 15 inches apart.

100 POSTPAID at **\$8.95**
Planting Time for



Japanese Yew

Special No. 27 50 CANADIAN HEMLOCK

Evergreen Hedge

Excellent, strong 3-yr., 8-12 in. plants; one of the best evergreens for grace and beauty. Start with these sturdy, well rooted three year plants for your specimen, background or hedge planting. Use in sun or shade. Shear or prune to keep at desired height.



50 POSTPAID at **\$12.95**
Planting Time for

Special No. 12-A

JUNIOR ORNAMENTALS

This offer includes 3 each of four most popular varieties. Heavy transplants, 2 yr. 8-12 in. Plants are low growing with exception of Arborvitae, and it can be kept sheared to small size for years. All four types are suitable for either conventional or ranch type homes.

3 AMERICAN ARBORVITAE

(Upright, for corners)

3 GLOBE ARBORVITAE

(Spreading)

3 PFITZER JUNIPER

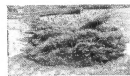
(Spreading)

3 JAPANESE YEW

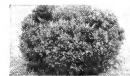
(Spreading)

SPECIAL No. 12-A **12** for **\$7.95**
3 each of All Four Postpaid

These sturdy little evergreens will be worth from \$5 to \$10 each in a few years. If desired, may be planted in small plot in garden for about 2 years, then transplanted to permanent locations.



Pfitzer Juniper



Japanese Yew



Pyramidal
Arborvitae



Globe Arborvitae

Special No. 5

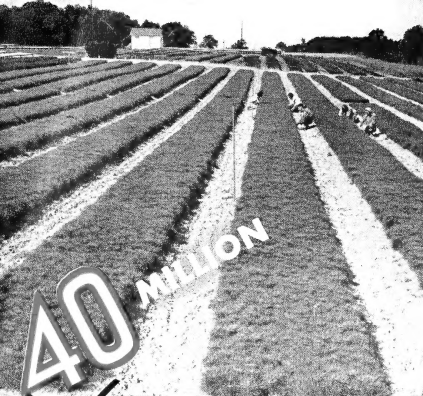
FOUNDATION PLANTING 6 Spreading Pfitzer Juniper 4 Upright Japanese Yew

All heavy bodied 10 to 16 in. plants 2 and 3 times transplanted. Strong roots for rapid growth. **JUNIPER**—Spreader, blue-green, fast growing for sunny spots. **YEW**—Upright, compact cone shape, deep rich green. Sun or shade. Pruned. Extra heavy healthy plants worth 3 to 4 times as much in a few years.

10 POSTPAID at **\$12.95**
Planting Time for



Pfitzer Juniper



40 MILLION

20 MILLION TREES A YEAR
MUSSER FORESTS, INC., INDIANA, PA.



BULK RATE
 U. S. POSTAGE
PAID
 INDIANA, PA.
 Permit No. 122

MUSSER SPECIALS

No substitutions. These offers are sold only as shown. Sorry, no C.O.D.'s on Special Offers. All Orders for Pennsylvania Destinations add 3% Sales Tax.

Special No. 1
25 EVERGREEN TREES
 Develop Quickly into Beautiful Specimens

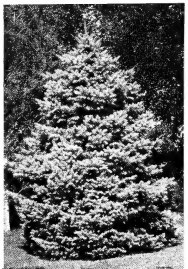
3- and 5-yr. Select Large, Healthy Trees **25** POSTPAID at Planting Time for **\$5.00**

5 Scotch Pine	6 to 12 inches
5 Austrian Pine	8 to 14 inches
5 Norway Spruce	8 to 14 inches
5 Colorado Blue Spruce	8 to 12 inches
5 Douglas Fir	8 to 12 inches

Special No. 2
BLUE SPRUCE
 5-yr. Transplants

5 POSTPAID at Planting Time for **\$3.95**

Excellent 8 to 12-in. transplanted stock. Color, blue-green to marvelous blue. Compact, sturdy. Handsome specimens or hedge. "The King of Ornamentals."



The King of Ornamentals

Special No. 9
6 Rhododendron and 6 Azalea
 Brilliant Color!

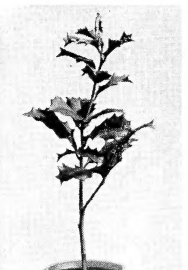
All 12 Shipped Postpaid in special carton **\$5.95**

Strong 2-yr. transplants, 4 to 8 inches tall. Mass of roots, large leaves. Hardy, Azalea mixed colors, orange, red and yellow and Rhododendron are hybrid seedlings grown from red flowering stock. **This offer is an outstanding value.**

Special No. 10
HOLLY
All 6 POSTPAID for **\$5.95**
 4 to 6 in. plants with mass of roots.

This offer includes 6 plants of two different varieties:

- 4 **Hardy American Holly**
 Pyramidal Tree Type glossy green leaves and brilliant red berries.
- 2 **Japanese Holly**
 Evergreen Shrub Type




Special No. 7
25 Evergreen Hedge \$5.50
AMERICAN ARBORVITAE—4-yr. Transplants. Start now with these 8 to 10 in. sturdy transplants, and have an outstandingly beautiful evergreen hedge. Shear it at any desired shape and height.
POSTPAID at Planting Time for \$5.50

Special No. 4
WHITE BIRCH
20 POSTPAID at Planting Time for **\$3.50**

Twenty 12- to 24-in. seedlings. Bark turns creamy-white after 3 to 4 years. Graceful clump by planting several together in each location. Hardy.



White Birch

PRINTED IN U.S.A. All Special Offers on this page are shipped Postpaid at proper planting time. Use enclosed Order Blank